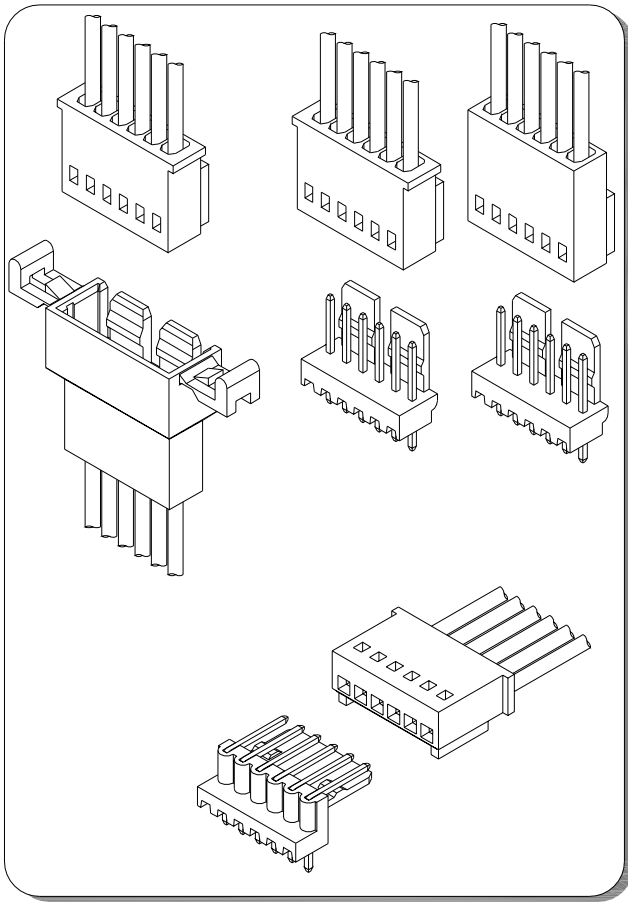


C2504 SERIES

2.50mm pitch wire to wire and wire to board connector



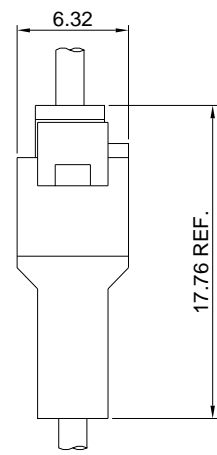
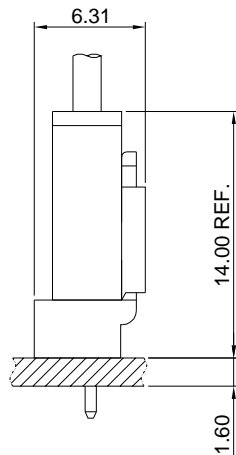
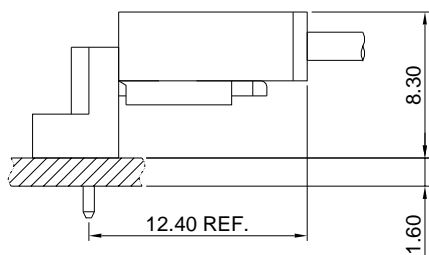
Specifications

- Current rating: 3A AC, DC
- Voltage rating: 250V AC, DC
- Temperature range: -40°C ~ +105°C
- Contact resistance: 20mΩ Max.
- Insulation resistance: 1000MΩ Min.
- Withstanding voltage: 1000V AC/minute
- *Compliant with RoHS and REACH*
- *Meet the HF/Halogen Free, need to customize*
- *Contact for details*

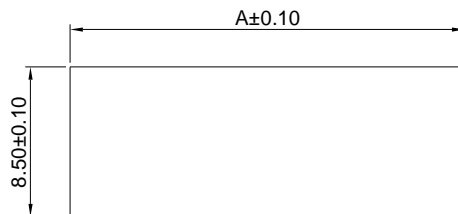
Standards



Assembly layout



Panel hole layout



PART NO.	Dimensions
	A
C2504HM-2P	12.40
C2504HM-3P	14.90
C2504HM-4P	17.40
C2504HM-5P	19.90
C2504HM-6P	22.40
C2504HM-7P	24.90
C2504HM-8P	27.40
C2504HM-9P	29.90
C2504HM-10P	32.40
C2504HM-11P	34.90
C2504HM-12P	37.40

Unit:mm

C2504 SERIES

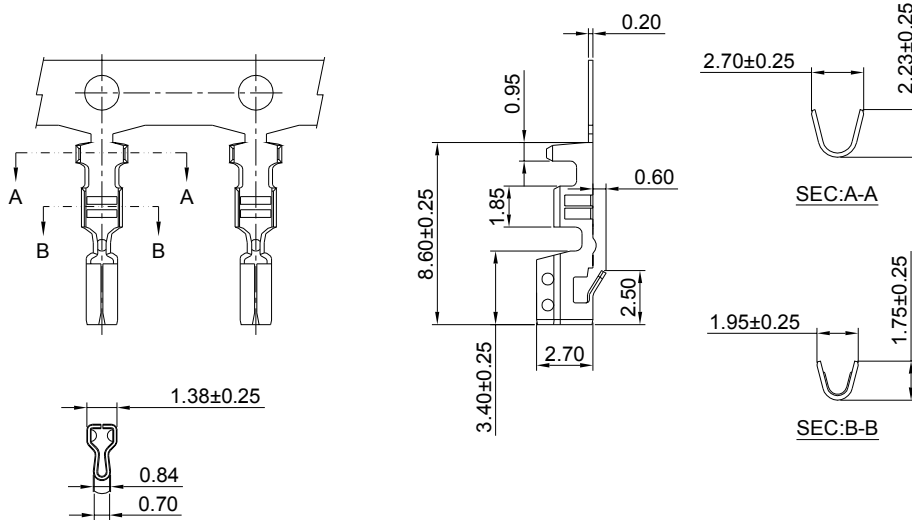
2.50mm pitch wire to wire and wire to board connector

C2504F-T

2.50mm pitch Crimp Terminal

Reference Informations:

*Used in C2504HF series Housing



Ordering information & Specifications:

Unit:mm

Part NO.	Wire Range	Insulation O.D.	Material	Finish	Qty/reel
C2504F-TB	AWG#22-#28	1.90mm(max)	Brass	Tin over Nickel	10,000 PCS
C2504F-TP	AWG#22-#28	1.90mm(max)	Phosphor Bronze	Tin over Nickel	10,000 PCS
C2504F-GB	AWG#22-#28	1.90mm(max)	Brass	Gold over Nickel	10,000 PCS
C2504F-GP	AWG#22-#28	1.90mm(max)	Phosphor Bronze	Gold over Nickel	10,000 PCS

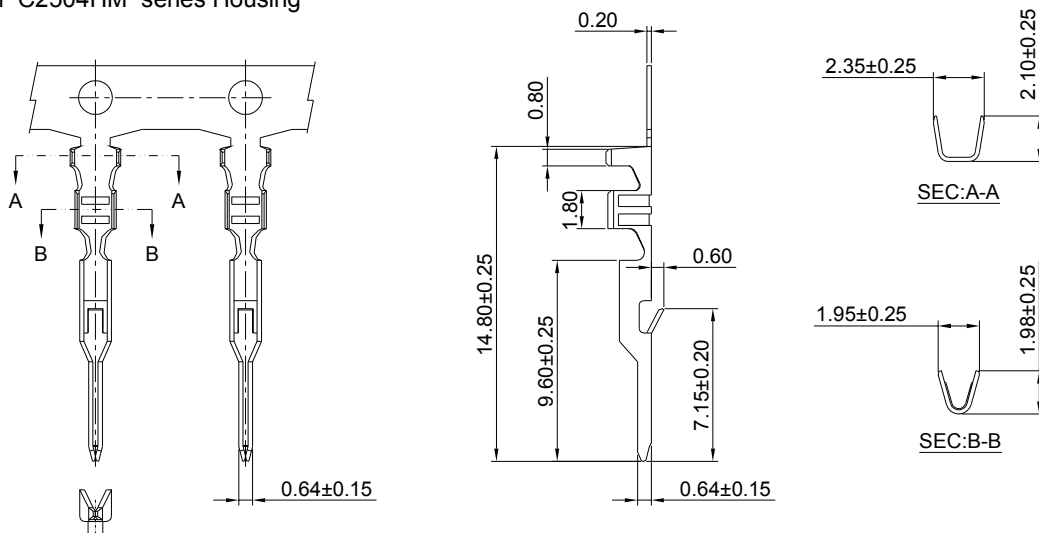
Optional Gold plating available but MOQ requested

C2504M-T

2.50mm pitch Crimp Terminal

Reference Informations:

*Used in C2504HM series Housing



Ordering information & Specifications:

Unit:mm

Part NO.	Wire Range	Insulation O.D.	Material	Finish	Qty/reel
C2504M-TB	AWG#22-#28	1.90mm(max)	Brass	Tin over Nickel	10,000 PCS
C2504M-TP	AWG#22-#28	1.90mm(max)	Phosphor Bronze	Tin over Nickel	10,000 PCS
C2504M-GB	AWG#22-#28	1.90mm(max)	Brass	Gold over Nickel	10,000 PCS
C2504M-GP	AWG#22-#28	1.90mm(max)	Phosphor Bronze	Gold over Nickel	10,000 PCS

Optional Gold plating available but MOQ requested

C2504 SERIES

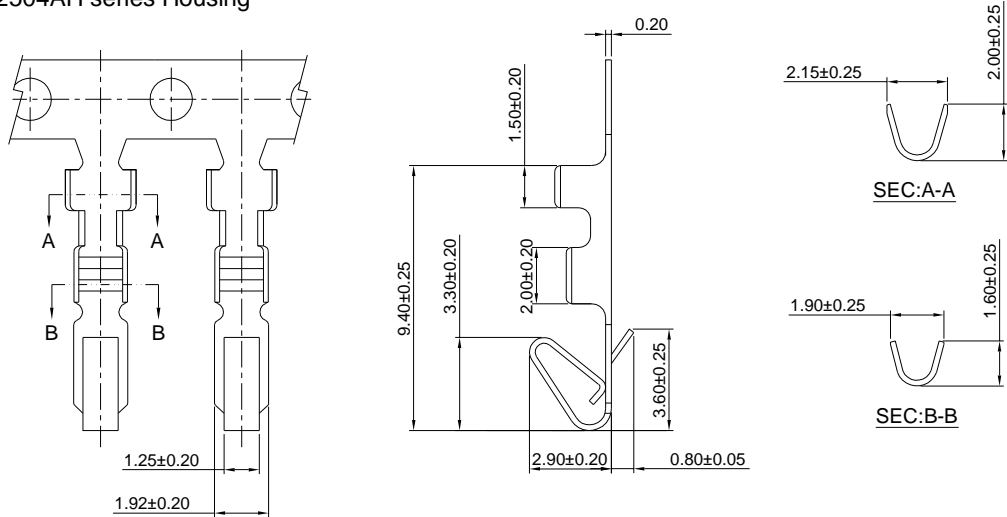
2.50mm pitch wire to wire and wire to board connector

C2504F-T-A

2.50mm Pitch Crimp Terminal

Reference Informations:

*Used in C2504AH series Housing



Ordering information & Specifications:

Unit:mm

Part NO.	Wire Range	Insulation O.D.	Material	Finish	Qty/reel
C2504F-TB-A	AWG#22-#28	1.90mm(max)	Brass	Tin over Nickel	10,000 PCS
C2504F-TP-A	AWG#22-#28	1.90mm(max)	Phosphor Bronze	Tin over Nickel	10,000 PCS
C2504F-GB-A	AWG#22-#28	1.90mm(max)	Brass	Gold over Nickel	10,000 PCS
C2504F-GP-A	AWG#22-#28	1.90mm(max)	Phosphor Bronze	Gold over Nickel	10,000 PCS

Optional Gold plating available but MOQ requested

C2504 SERIES

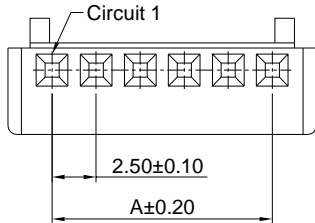
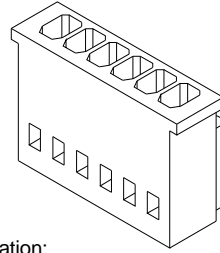
2.50mm pitch wire to wire and wire to board connector

C2504HF

2.50mm Pitch Housing

Reference Informations:

- *Material:Nylon 66,UL94V-0
- *Suitable C2504F series Terminal
- *Mates with C2504HM C2504HMA series Housing
- *Color:White

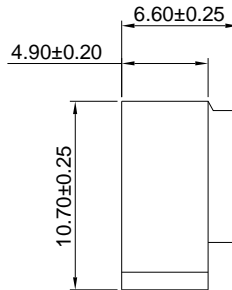
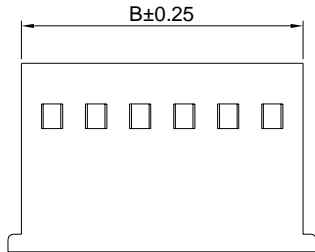


Ordering Information:
C2504HF-XP - **
 $\frac{1}{2}$
 1.Part No.
 2.Color:
 (blank):White
 BE:Beige

Ordering Information & Dimensions:

PART NO.	Dimensions	
	A	B
C2504HF-2P	2.50	6.00
C2504HF-3P	5.00	8.50
C2504HF-4P	7.50	11.00
C2504HF-5P	10.00	13.50
C2504HF-6P	12.50	16.00
C2504HF-7P	15.00	18.50
C2504HF-8P	17.50	21.00
C2504HF-9P	20.00	23.50
C2504HF-10P	22.50	26.00
C2504HF-11P	25.00	28.50
C2504HF-12P	27.50	31.00
C2504HF-13P	30.00	33.50
C2504HF-14P	32.50	36.00
C2504HF-15P	35.00	38.50
C2504HF-16P	37.50	41.00
C2504HF-17P	40.00	43.50
C2504HF-18P	42.50	46.00
C2504HF-19P	45.00	48.50
C2504HF-20P	47.50	51.00

Unit: mm

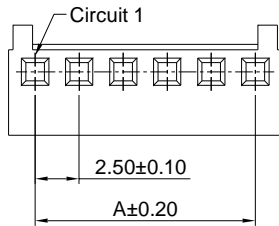
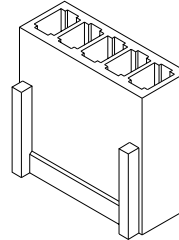


C2504AH

2.50mm Pitch Housing

Reference Informations:

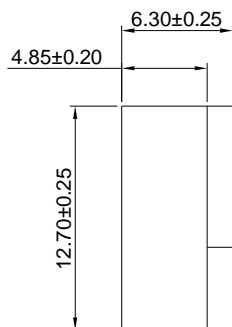
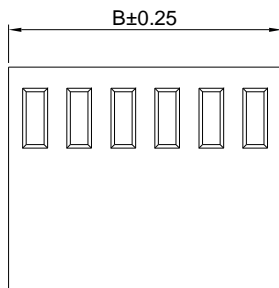
- *Material:Nylon 66,UL94V-0
- *Suitable A2543F-A series Terminal
- *Mates with C2504WV C2504WR series Wafer
- *Color:White



Ordering Information & Dimensions:

PART NO.	Dimensions	
	A	B
C2504AH-2P	2.50	5.50
C2504AH-3P	5.00	8.00
C2504AH-4P	7.50	10.50
C2504AH-5P	10.00	13.00
C2504AH-6P	12.50	15.50
C2504AH-7P	15.00	18.00
C2504AH-8P	17.50	20.50
C2504AH-9P	20.00	23.00
C2504AH-10P	22.50	25.50
C2504AH-11P	25.00	28.00
C2504AH-12P	27.50	30.50
C2504AH-13P	30.00	33.00
C2504AH-14P	32.50	35.50
C2504AH-15P	35.00	38.00
C2504AH-16P	37.50	40.50
C2504AH-17P	40.00	43.00
C2504AH-18P	42.50	45.50
C2504AH-19P	45.00	48.00
C2504AH-20P	47.50	50.50

Unit: mm



C2504 SERIES

2.50mm pitch wire to wire and wire to board connector

C2504HM

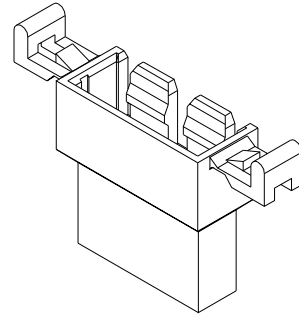
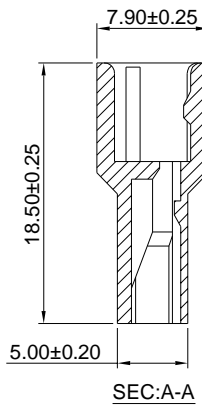
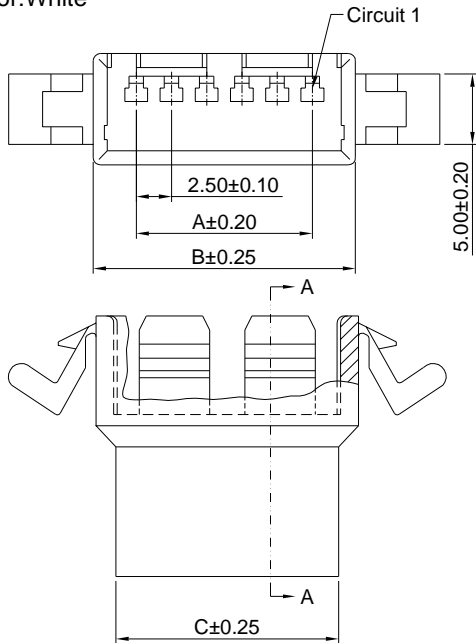
2.50mm Pitch Housing

Reference Informations:

- *Material:Nylon 66, UL94V-0
- *Suitable C2504M series Terminal
- *Mates with C2504HF series Housing
- *Color:White

Ordering Information:

- C2504HM-XP - **
 1 2
- 1.Part No.
 - 2.Color:
 (blank):White
 BE:Beige



Ordering Information & Dimensions:

PART NO.	Dimensions		
	A	B	C
C2504HM-2P	2.50	8.60	5.80
C2504HM-3P	5.00	11.10	8.30
C2504HM-4P	7.50	13.60	10.80
C2504HM-5P	10.00	16.10	13.30
C2504HM-6P	12.50	18.60	15.80
C2504HM-7P	15.00	21.10	18.30
C2504HM-8P	17.50	23.60	20.80
C2504HM-9P	20.00	26.10	23.30
C2504HM-10P	22.50	28.60	25.80
C2504HM-11P	25.00	31.10	28.30
C2504HM-12P	27.50	33.60	30.80

Unit: mm

C2504HMA

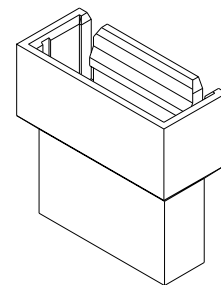
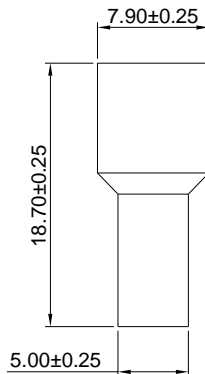
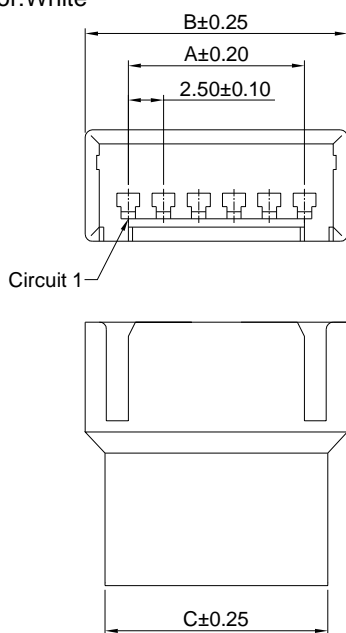
2.50mm Pitch Housing

Reference Informations:

- *Material:Nylon 66, UL94V-0
- *Suitable C2504M series Terminal
- *Mates with C2504HF series Housing
- *Color:White

Ordering Information:

- C2504HMA-XP - **
 1 2
- 1.Part No.
 - 2.Color:
 (blank):White
 BE:Beige



Ordering Information & Dimensions:

PART NO.	Dimensions		
	A	B	C
C2504HMA-2P	2.50	8.60	5.80
C2504HMA-3P	5.00	11.10	8.30
C2504HMA-4P	7.50	13.60	10.80
C2504HMA-5P	10.00	16.10	13.30
C2504HMA-6P	12.50	18.60	15.80
C2504HMA-7P	15.00	21.10	18.30
C2504HMA-8P	17.50	23.60	20.80
C2504HMA-9P	20.00	26.10	23.30
C2504HMA-10P	22.50	28.60	25.80
C2504HMA-11P	25.00	31.10	28.30
C2504HMA-12P	27.50	33.60	30.80

Unit: mm

C2504 SERIES

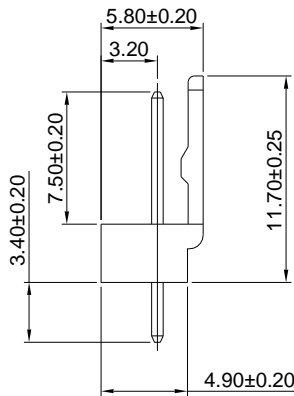
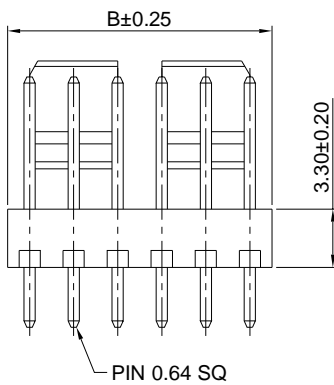
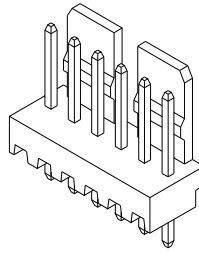
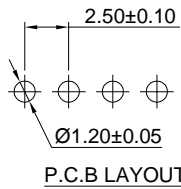
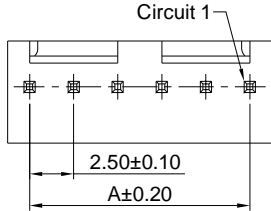
2.50mm pitch wire to wire and wire to board connector

C2504WV

2.50mm Pitch 180° Wafer

Reference Informations:

- *Material:Pin:Brass/Tin over Nickel
Insulator:Nylon 66,UL94V-0
- *Mates with C2504 series Housing
- *Color:Beige



Ordering Information & Dimensions:

PART NO.	Dimensions	
	A	B
C2504WV-2P	2.50	5.00
C2504WV-3P	5.00	7.50
C2504WV-4P	7.50	10.00
C2504WV-5P	10.00	12.50
C2504WV-6P	12.50	15.00
C2504WV-7P	15.00	17.50
C2504WV-8P	17.50	20.00
C2504WV-9P	20.00	22.50
C2504WV-10P	22.50	25.00
C2504WV-11P	25.00	27.50
C2504WV-12P	27.50	30.00
C2504WV-13P	30.00	32.50
C2504WV-14P	32.50	35.00
C2504WV-15P	35.00	37.50
C2504WV-16P	37.50	40.00
C2504WV-17P	40.00	42.50
C2504WV-18P	42.50	45.00
C2504WV-19P	45.00	47.50
C2504WV-20P	47.50	50.00

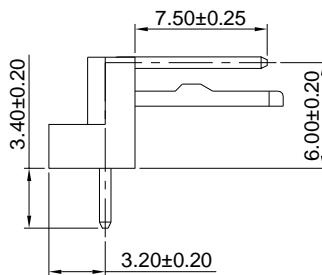
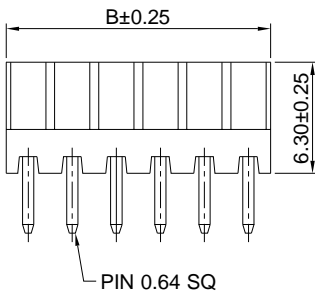
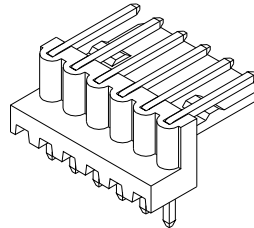
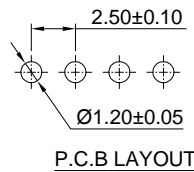
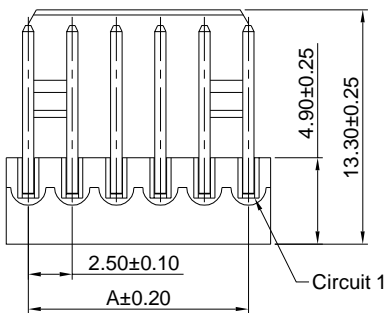
Unit: mm

C2504WR

2.50mm Pitch 90° Wafer

Reference Informations:

- *Material:Pin:Brass/Tin over Nickel
Insulator:Nylon 66,UL94V-0
- *Mates with C2504 series Housing
- *Color:Beige



Ordering Information & Dimensions:

PART NO.	Dimensions	
	A	B
C2504WR-2P	2.50	5.00
C2504WR-3P	5.00	7.50
C2504WR-4P	7.50	10.00
C2504WR-5P	10.00	12.50
C2504WR-6P	12.50	15.00
C2504WR-7P	15.00	17.50
C2504WR-8P	17.50	20.00
C2504WR-9P	20.00	22.50
C2504WR-10P	22.50	25.00
C2504WR-11P	25.00	27.50
C2504WR-12P	27.50	30.00
C2504WR-13P	30.00	32.50
C2504WR-14P	32.50	35.00
C2504WR-15P	35.00	37.50
C2504WR-16P	37.50	40.00
C2504WR-17P	40.00	42.50
C2504WR-18P	42.50	45.00
C2504WR-19P	45.00	47.50
C2504WR-20P	47.50	50.00

Unit: mm