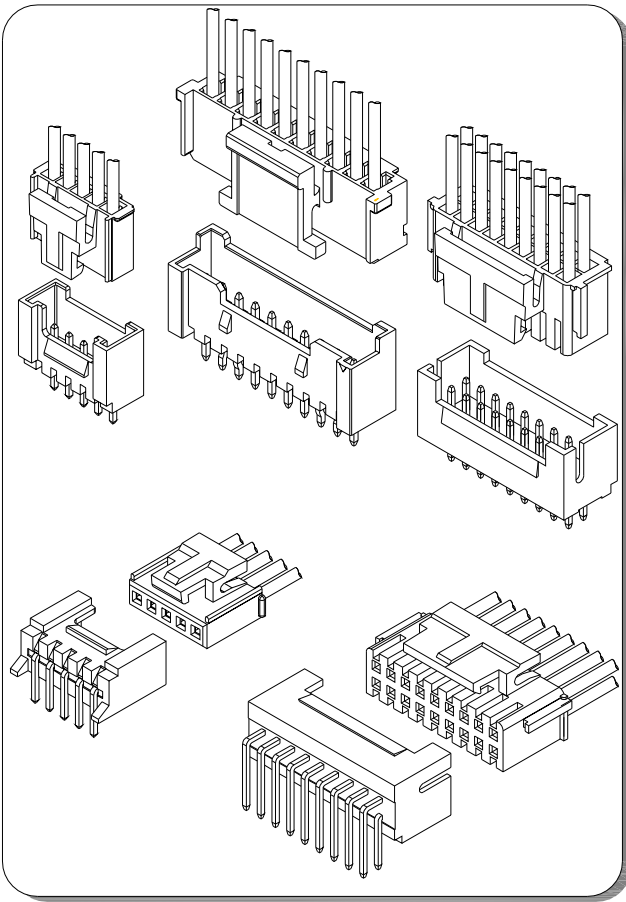


# A2008 SERIES

2.00mm pitch wire to board connector



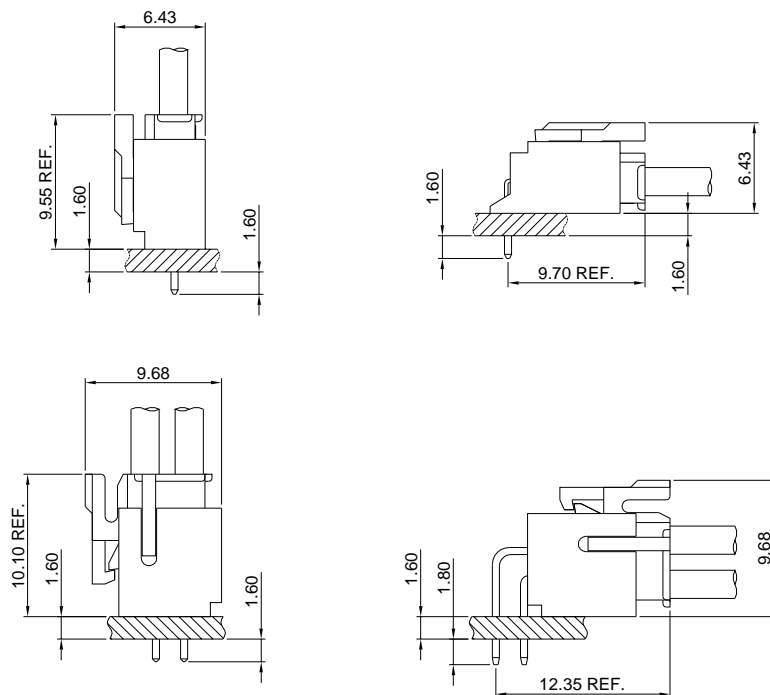
## Specifications

- Current rating:3A AC,DC
- Voltage rating:250V AC,DC
- Temperature range:-40°C~+105°C
- Contact resistance:30mΩMax.
- Insulation resistance:1000MΩMin.
- Withstanding voltage:1000V AC/minute
- \*Compliant with RoHS and REACH\*
- \*Meet the HF/Halogen Free,need to customize\*
- \*Contact for details\*

## Standards



## Assembly layout



# A2008 SERIES

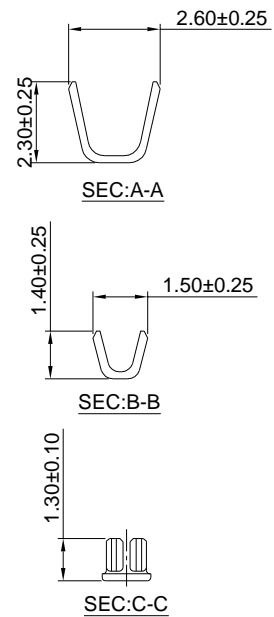
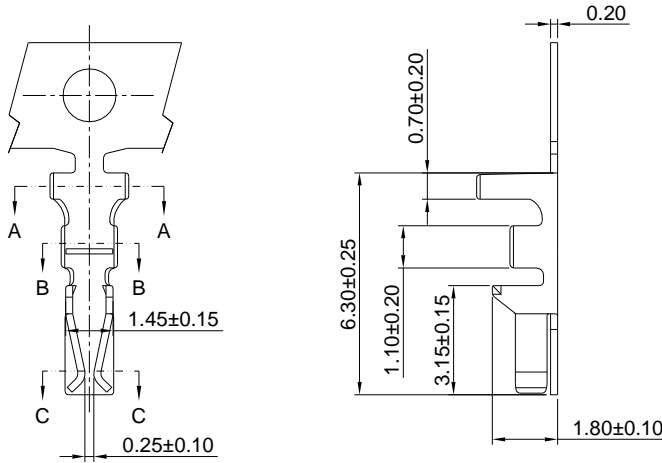
2.00mm pitch wire to board connector

## A2008-T

2.00mm pitch Single Row Crimp Terminal

### Reference Informations:

\*Used in A2008 series Single Row Housing



### Ordering information & Specifications:

Unit:mm

Part NO.	Wire Range	Insulation O.D.	Material	Finish	Qty/reel
A2008-TP	AWG#22-#30	1.45mm(max)	Phosphor Bronze	Tin over Nickel	10,000 PCS
A2008-GP	AWG#22-#30	1.45mm(max)	Phosphor Bronze	Gold over Nickel	10,000 PCS

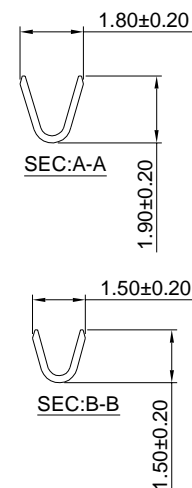
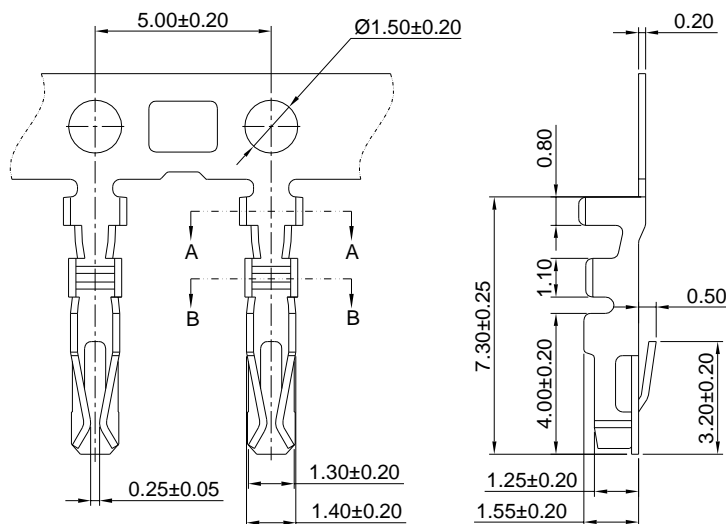
Optional Gold plating available but MOQ requested

## A2008-T-A

2.00mm pitch Dual Row Crimp Terminal

### Reference Informations:

\*Used in A2008 series Dual Row Housing



### Ordering information & Specifications:

Unit:mm

Part NO.	Wire Range	Insulation O.D.	Material	Finish	Qty/reel
A2008-TP-A	AWG#22-#30	1.45mm(max)	Phosphor Bronze	Tin over Nickel	10,000 PCS
A2008-GP-A	AWG#22-#30	1.45mm(max)	Phosphor Bronze	Gold over Nickel	10,000 PCS

Optional Gold plating available but MOQ requested

# A2008 SERIES

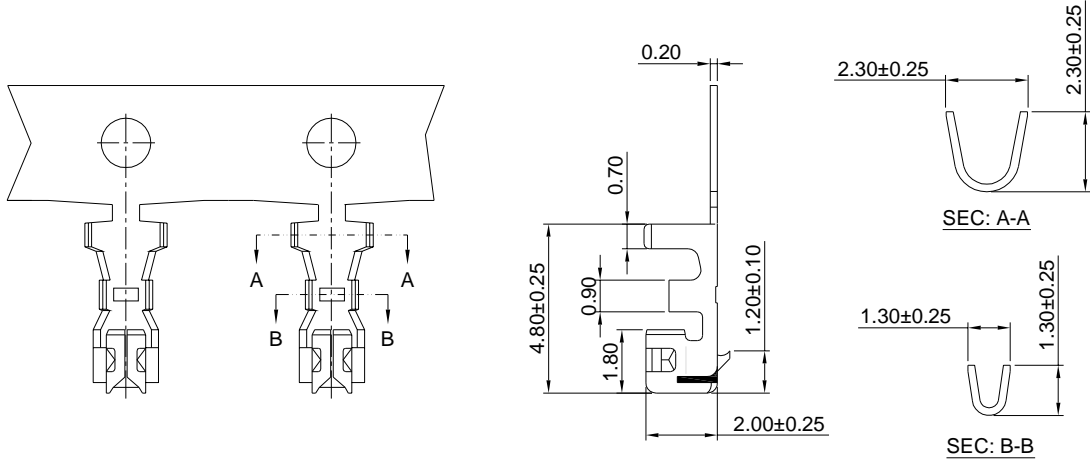
2.00mm pitch wire to board connector

## A2008-T-B

2.00mm pitch Single Row Crimp Terminal

### Reference Informations:

\*Used in A2008HA series Single Row Housing



### Ordering information & Specifications:

Unit:mm

Part NO.	Wire Range	Insulation O.D.	Material	Finish	Qty/reel
A2008-TP-B	AWG#24-#30	1.40mm(max)	Phosphor Bronze	Tin over Nickel	10,000 PCS
A2008-GP-B	AWG#24-#30	1.40mm(max)	Phosphor Bronze	Gold over Nickel	10,000 PCS

Optional Gold plating available but MOQ requested

## A2008H

2.00mm pitch Housing

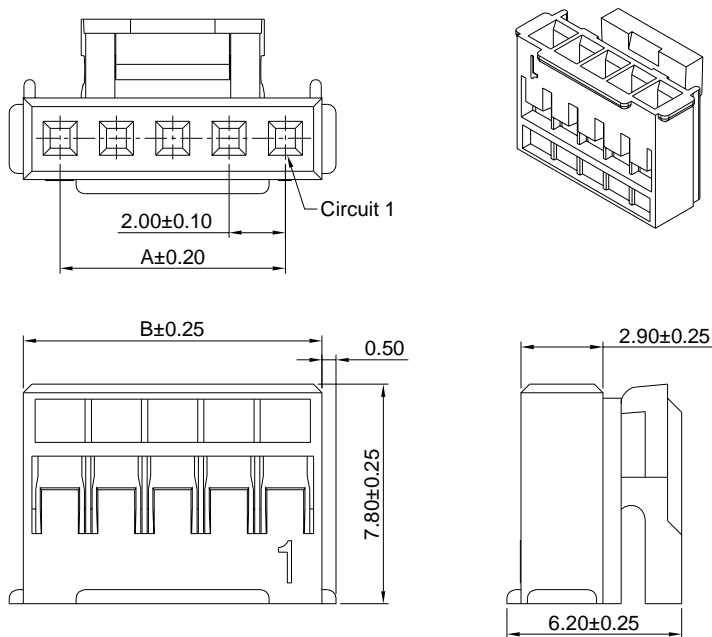
### Reference Informations:

\*Material:Nylon 66,UL94V-0

\*Suitable A2008 series Terminal

\*Mates with A2008 series Single Row Wafer

\*Color:White



### Ordering Information & Dimensions:

PART NO.	Dimensions	
	A	B
A2008H-2P	2.00	4.70
A2008H-3P	4.00	6.70
A2008H-4P	6.00	8.70
A2008H-5P	8.00	10.70
A2008H-6P	10.00	12.70
A2008H-7P	12.00	14.70
A2008H-8P	14.00	16.70
A2008H-9P	16.00	18.70
A2008H-10P	18.00	20.70
A2008H-11P	20.00	22.70
A2008H-12P	22.00	24.70
A2008H-13P	24.00	26.70
A2008H-14P	26.00	28.70
A2008H-15P	28.00	30.70
A2008H-16P	30.00	32.70

Unit: mm

# A2008 SERIES

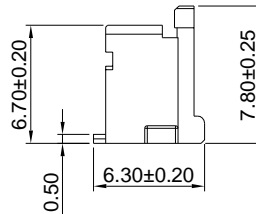
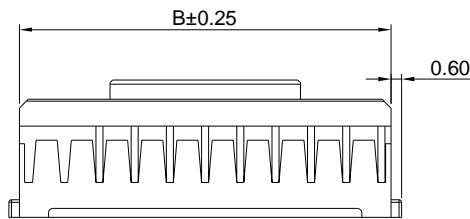
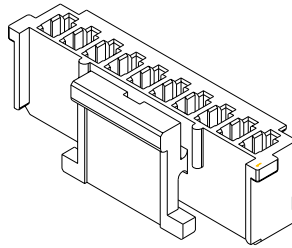
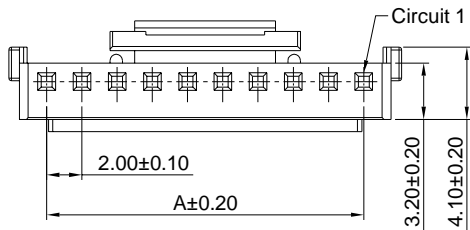
2.00mm pitch wire to board connector

## A2008HA

2.00mm pitch Housing

### Reference Informations:

- \*Material:Nylon 66,UL94V-0
- \*Suitable A2008-T-B series Terminal
- \*Mates with A2008WVA series Wafer
- \*Color:Ivory



### Ordering Information & Dimensions:

PART NO.	Dimensions	
	A	B
A2008HA-4P	6.00	9.10
A2008HA-5P	8.00	11.10
A2008HA-6P	10.00	13.10
A2008HA-7P	12.00	15.10
A2008HA-8P	14.00	17.10
A2008HA-9P	16.00	19.10
A2008HA-10P	18.00	21.10
A2008HA-11P	20.00	23.10
A2008HA-12P	22.00	25.10
A2008HA-13P	24.00	27.10
A2008HA-14P	26.00	29.10
A2008HA-15P	28.00	31.10
A2008HA-16P	30.00	33.10
A2008HA-17P	24.00	35.10
A2008HA-18P	26.00	37.10
A2008HA-19P	28.00	39.10
A2008HA-20P	30.00	41.10

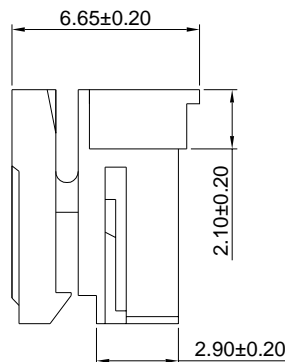
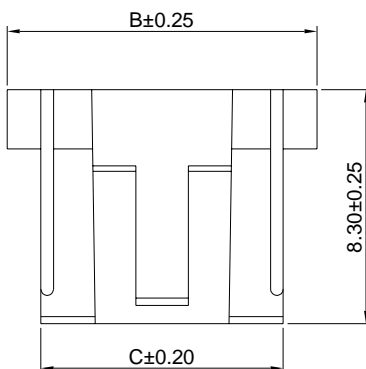
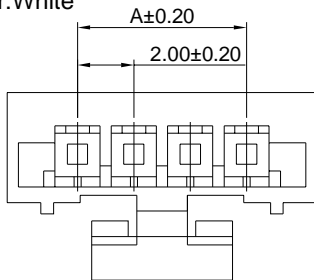
Unit: mm

## A2008HB

2.00mm pitch Housing

### Reference Informations:

- \*Material:Nylon 66,UL94V-0
- \*Suitable A2008-T-B series Terminal
- \*Mates with A2008WVA series Wafer
- \*Color:White



### Ordering Information & Dimensions:

PART NO.	Dimensions		
	A	B	C
A2008HB-2P	2.00	7.00	4.60
A2008HB-3P	4.00	9.00	6.60
A2008HB-4P	6.00	11.00	8.60
A2008HB-5P	8.00	13.00	10.60
A2008HB-6P	10.00	15.00	12.60
A2008HB-7P	12.00	17.00	14.60
A2008HB-8P	14.00	19.00	16.60
A2008HB-9P	16.00	21.00	18.60
A2008HB-10P	18.00	23.00	20.60
A2008HB-11P	20.00	25.00	22.60
A2008HB-12P	22.00	27.00	24.60
A2008HB-13P	24.00	29.00	26.60
A2008HB-14P	26.00	31.00	28.60
A2008HB-15P	28.00	33.00	30.60

Unit: mm

# A2008 SERIES

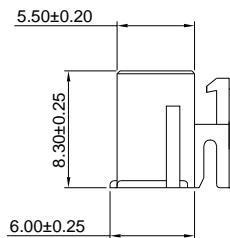
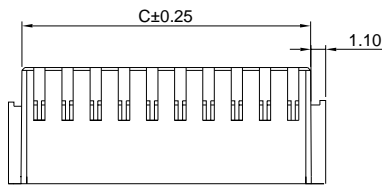
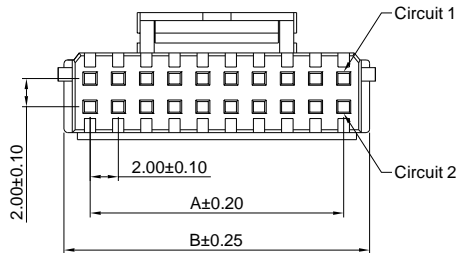
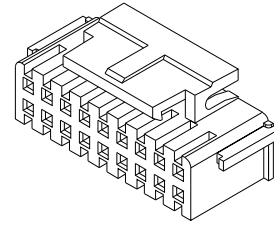
2.00mm pitch wire to board connector

## A2008H-2

2.00mm pitch Dual Row Housing

### Reference Informations:

- \*Material:Nylon 66,UL94V-0
- \*Suitable A2008-T-A series Terminal
- \*Mates with A2008 series Dual Row Wafer
- \*Color:White



### Ordering Information & Dimensions:

PART NO.	Dimensions		
	A	B	C
A2008H-2x3P	4.00	7.70	6.70
A2008H-2x4P	6.00	9.70	8.70
A2008H-2x5P	8.00	11.70	10.70
A2008H-2x6P	10.00	13.70	12.70
A2008H-2x7P	12.00	15.70	14.70
A2008H-2x8P	14.00	17.70	16.70
A2008H-2x9P	16.00	19.70	18.70
A2008H-2x10P	18.00	21.70	20.70
A2008H-2x11P	20.00	23.70	22.70
A2008H-2x12P	22.00	25.70	24.70
A2008H-2x13P	24.00	27.70	26.70
A2008H-2x14P	26.00	29.70	28.70
A2008H-2x15P	28.00	31.70	30.70
A2008H-2x16P	30.00	33.70	32.70
A2008H-2x20P	38.00	41.70	40.70

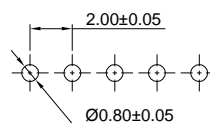
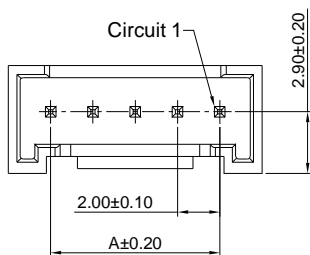
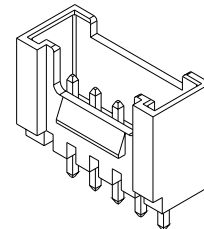
Unit: mm

## A2008WV

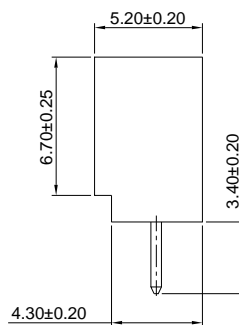
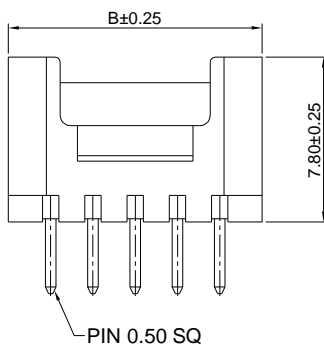
2.00mm pitch 180° Wafer

### Reference Informations:

- \*Material:Pin:Brass/Tin over Nickel  
Insulator:Nylon 66,UL94V-0
- \*Mates with A2008 series Single Row Housing
- \*Color:White



P.C.B LAYOUT



### Ordering Information & Dimensions:

PART NO.	Dimensions	
	A	B
A2008WV-2P	2.00	6.00
A2008WV-3P	4.00	8.00
A2008WV-4P	6.00	10.00
A2008WV-5P	8.00	12.00
A2008WV-6P	10.00	14.00
A2008WV-7P	12.00	16.00
A2008WV-8P	14.00	18.00
A2008WV-9P	16.00	20.00
A2008WV-10P	18.00	22.00
A2008WV-11P	20.00	24.00
A2008WV-12P	22.00	26.00
A2008WV-13P	24.00	28.00
A2008WV-14P	26.00	30.00
A2008WV-15P	28.00	32.00
A2008WV-16P	30.00	34.00

Unit: mm

# A2008 SERIES

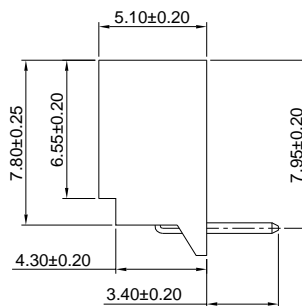
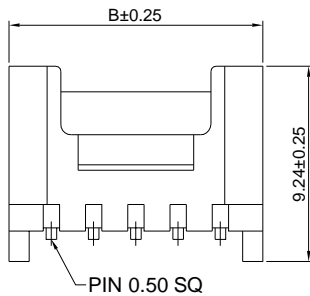
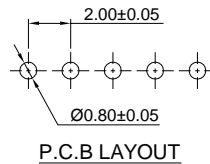
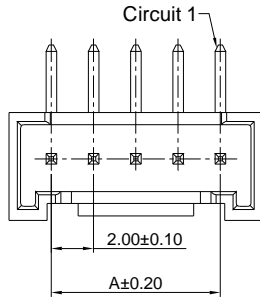
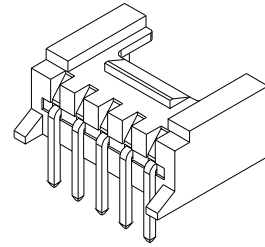
2.00mm pitch wire to board connector

## A2008WR

2.00mm pitch 90° Wafer

### Reference Informations:

- \*Material:Pin:Brass/Tin over Nickel  
Insulator:Nylon 66,UL94V-0
- \*Mates with A2008 series Single Row Housing
- \*Color:White



### Ordering Information & Dimensions:

PART NO.	Dimensions	
	A	B
A2008WR-2P	2.00	6.00
A2008WR-3P	4.00	8.00
A2008WR-4P	6.00	10.00
A2008WR-5P	8.00	12.00
A2008WR-6P	10.00	14.00
A2008WR-7P	12.00	16.00
A2008WR-8P	14.00	18.00
A2008WR-9P	16.00	20.00
A2008WR-10P	18.00	22.00
A2008WR-11P	20.00	24.00
A2008WR-12P	22.00	26.00
A2008WR-13P	24.00	28.00
A2008WR-14P	26.00	30.00
A2008WR-15P	28.00	32.00
A2008WR-16P	30.00	34.00

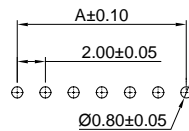
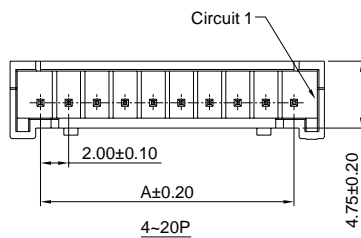
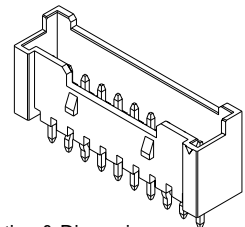
Unit: mm

## A2008WVA

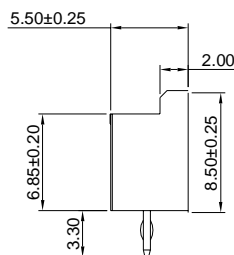
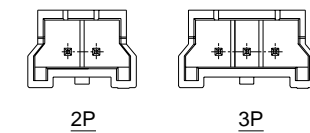
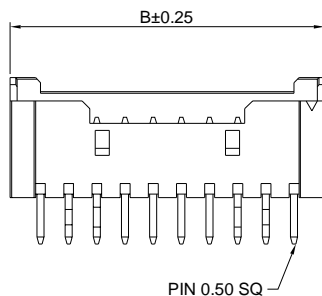
2.00mm pitch 180° Wafer

### Reference Informations:

- \*Material:Pin:Brass/Tin over Nickel  
Insulator:Nylon 66,UL94V-0
- \*Mates with A2008HA series Single Row Housing
- \*Color:Ivory



P.C.B LAYOUT



### Ordering Information & Dimensions:

PART NO.	Dimensions	
	A	B
A2008WVA-2P	2.00	7.70
A2008WVA-3P	4.00	9.70
A2008WVA-4P	6.00	10.30
A2008WVA-5P	8.00	12.30
A2008WVA-6P	10.00	14.30
A2008WVA-7P	12.00	16.30
A2008WVA-8P	14.00	18.30
A2008WVA-9P	16.00	20.30
A2008WVA-10P	18.00	22.30
A2008WVA-11P	20.00	24.30
A2008WVA-12P	22.00	26.30
A2008WVA-13P	24.00	28.30
A2008WVA-14P	26.00	30.30
A2008WVA-15P	28.00	32.30
A2008WVA-16P	30.00	34.30
A2008WVA-17P	32.00	36.30
A2008WVA-18P	34.00	38.30
A2008WVA-19P	36.00	40.30
A2008WVA-20P	38.00	42.30

Unit: mm

# A2008 SERIES

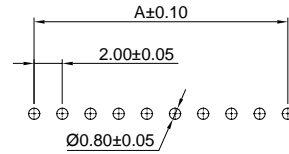
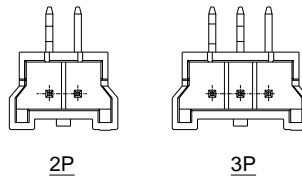
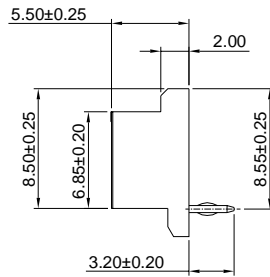
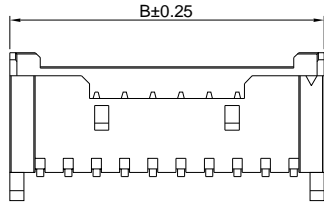
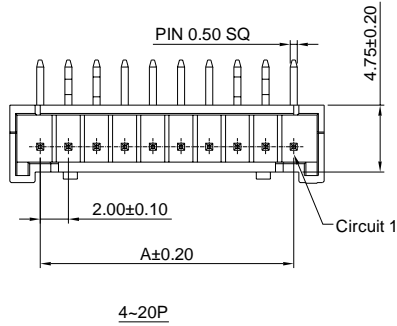
2.00mm pitch wire to board connector

## A2008WRA

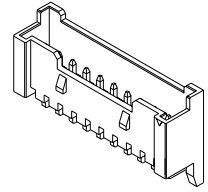
2.00mm pitch 90° Wafer

### Reference Informations:

- \*Material: Pin: Brass/Tin over Nickel  
Insulator: Nylon 66, UL94V-0
- \*Mates with A2008 series Single Row Housing
- \*Color: Ivory



P.C.B LAYOUT



### Ordering Information & Dimensions:

PART NO.	Dimensions	
	A	B
A2008WRA-2P	2.00	7.70
A2008WRA-3P	4.00	9.70
A2008WRA-4P	6.00	10.00
A2008WRA-5P	8.00	12.00
A2008WRA-6P	10.00	14.00
A2008WRA-7P	12.00	16.00
A2008WRA-8P	14.00	18.00
A2008WRA-9P	16.00	20.00
A2008WRA-10P	18.00	22.00
A2008WRA-11P	20.00	24.00
A2008WRA-12P	22.00	26.00
A2008WRA-13P	24.00	28.00
A2008WRA-14P	26.00	30.00
A2008WRA-15P	28.00	32.00
A2008WRA-16P	30.00	34.00
A2008WRA-17P	32.00	36.30
A2008WRA-18P	34.00	38.30
A2008WRA-19P	36.00	40.30
A2008WRA-20P	38.00	42.30

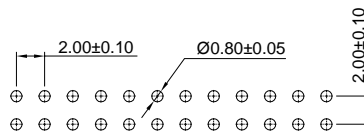
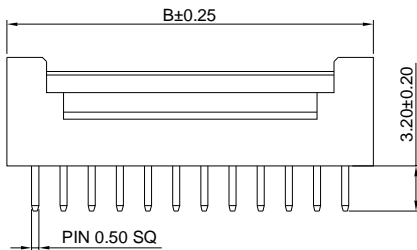
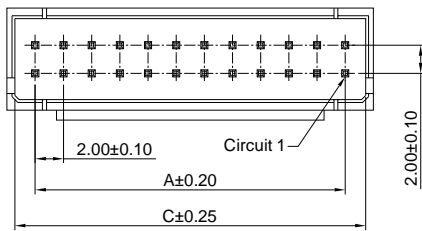
Unit: mm

## A2008WV-2

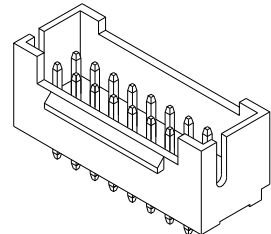
2.00mm pitch 180° Dual Row Wafer

### Reference Informations:

- \*Material: Pin: Brass/Tin over Nickel  
Insulator: Nylon 66, UL94V-0
- \*Mates with A2008 series Dual Row Housing
- \*Color: Ivory



P.C.B LAYOUT



### Ordering Information & Dimensions:

PART NO.	Dimensions		
	A	B	C
A2008WV-2x3P	4.00	8.00	6.80
A2008WV-2x4P	6.00	10.00	8.80
A2008WV-2x5P	8.00	12.00	10.80
A2008WV-2x6P	10.00	14.00	12.80
A2008WV-2x7P	12.00	16.00	14.80
A2008WV-2x8P	14.00	18.00	16.80
A2008WV-2x9P	16.00	20.00	18.80
A2008WV-2x10P	18.00	22.00	20.80
A2008WV-2x11P	20.00	24.00	22.80
A2008WV-2x12P	22.00	26.00	24.80
A2008WV-2x13P	24.00	28.00	26.80
A2008WV-2x14P	26.00	30.00	28.80
A2008WV-2x15P	28.00	32.00	30.80
A2008WV-2x16P	30.00	34.00	32.80
A2008WV-2x20P	38.00	42.00	40.80

Unit: mm

# A2008 SERIES

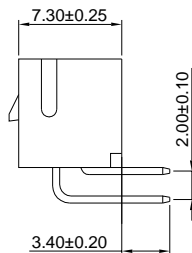
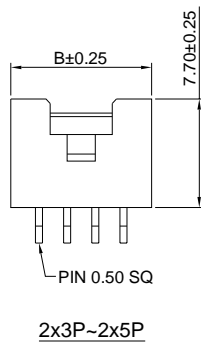
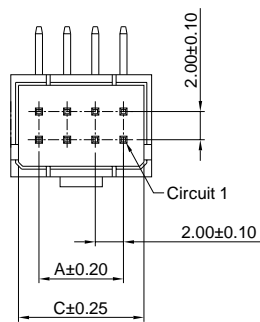
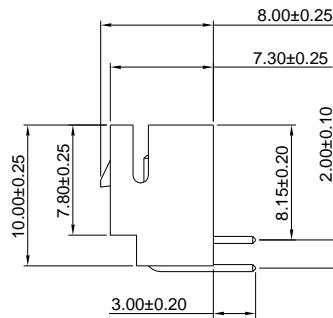
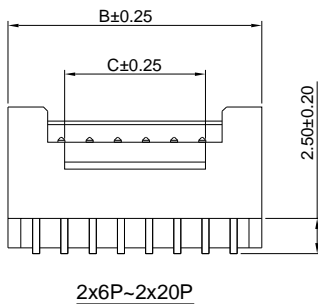
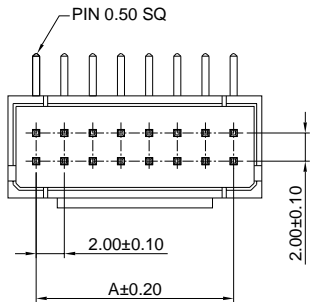
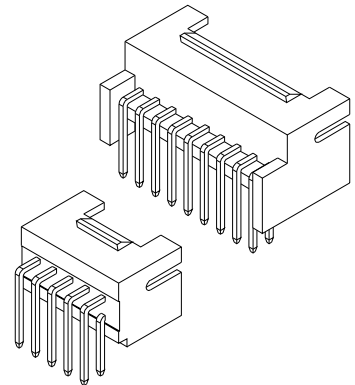
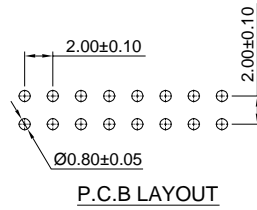
2.00mm pitch wire to board connector

## A2008WR-2

2.00mm pitch 90° Dual Row Wafer

### Reference Informations:

- \*Material: Pin: Brass/Tin over Nickel  
Insulator: Nylon 66, UL94V-0
- \*Mates with A2008 series Dual Row Housing
- \*Color: Ivory



### Ordering Information & Dimensions:

PART NO.	Dimensions		
	A	B	C
A2008WR-2x3P	4.00	8.00	6.80
A2008WR-2x4P	6.00	10.00	8.80
A2008WR-2x5P	8.00	12.00	10.80
A2008WR-2x6P	10.00	14.00	12.80
A2008WR-2x7P	12.00	16.00	14.80
A2008WR-2x8P	14.00	18.00	16.80
A2008WR-2x9P	16.00	20.00	18.80
A2008WR-2x10P	18.00	22.00	20.80
A2008WR-2x11P	20.00	24.00	22.80
A2008WR-2x12P	22.00	26.00	24.80
A2008WR-2x13P	24.00	28.00	26.80
A2008WR-2x14P	26.00	30.00	28.80
A2008WR-2x15P	28.00	32.00	30.80
A2008WR-2x16P	30.00	34.00	32.80
A2008WR-2x20P	38.00	42.00	40.80

Unit: mm



# A2008 SERIES

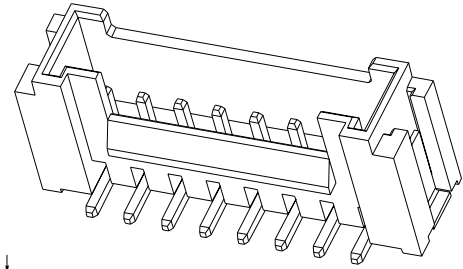
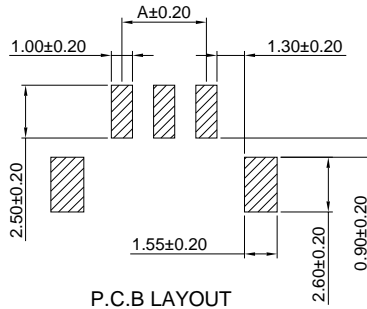
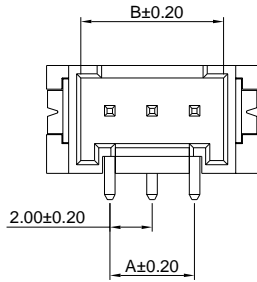
2.00mm pitch wire to board connector

## A2008WV-S

2.00mm pitch 180° Wafer-SMT TYPE

### Reference Informations:

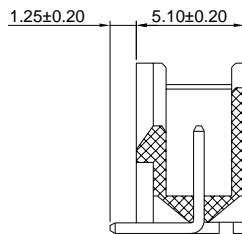
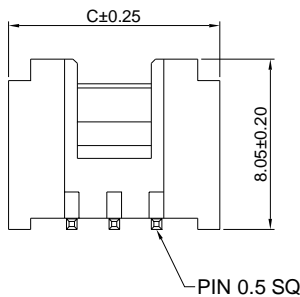
- \*Material:Pin:Brass/Tin over Nickel  
Insulator:Nylon6T,UL94V-0
- \*Mates with A2008 series Single Row Housing
- \*Color:Ivory



### Ordering Information & Dimensions:

PART NO.	Dimensions		
	A	B	C
A2008WV-S-2P	2.00	4.75	8.00
A2008WV-S-3P	4.00	6.75	10.00
A2008WV-S-4P	6.00	8.75	12.00
A2008WV-S-5P	8.00	10.75	14.00
A2008WV-S-6P	10.00	12.75	16.00
A2008WV-S-7P	12.00	14.75	18.00
A2008WV-S-8P	14.00	16.75	20.00
A2008WV-S-9P	16.00	18.75	22.00
A2008WV-S-10P	18.00	20.75	24.00
A2008WV-S-11P	20.00	22.75	26.00
A2008WV-S-12P	22.00	24.75	28.00
A2008WV-S-13P	24.00	26.75	30.00
A2008WV-S-14P	26.00	28.75	32.00
A2008WV-S-15P	28.00	30.75	34.00
A2008WV-S-16P	30.00	32.75	36.00

Unit: mm

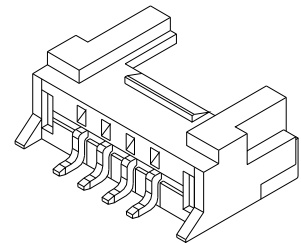
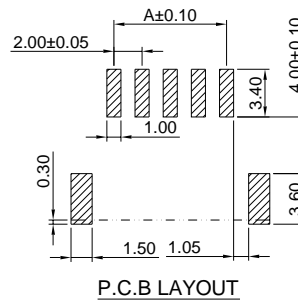
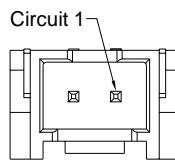
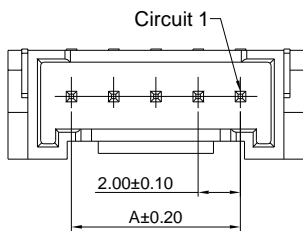


## A2008WR-S

2.00mm pitch 90° Wafer-SMT TYPE

### Reference Informations:

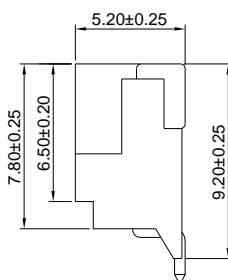
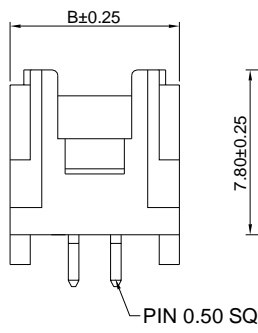
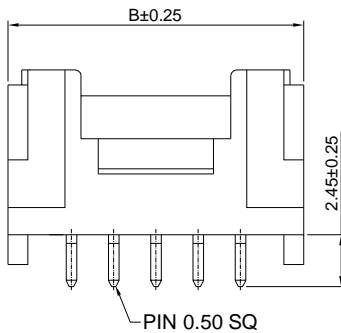
- \*Material:Pin:Brass/Tin over Nickel  
Insulator:Nylon6T,UL94V-0
- \*Mates with A2008 series Single Row Housing
- \*Color:Beige



### Ordering Information & Dimensions:

PART NO.	Dimensions	
	A	B
A2008WR-S-2P	2.00	8.00
A2008WR-S-3P	4.00	10.00
A2008WR-S-4P	6.00	12.00
A2008WR-S-5P	8.00	14.00
A2008WR-S-6P	10.00	16.00
A2008WR-S-7P	12.00	18.00
A2008WR-S-8P	14.00	20.00
A2008WR-S-9P	16.00	22.00
A2008WR-S-10P	18.00	24.00
A2008WR-S-11P	20.00	26.00
A2008WR-S-12P	22.00	28.00
A2008WR-S-13P	24.00	30.00
A2008WR-S-14P	26.00	32.00
A2008WR-S-15P	28.00	34.00
A2008WR-S-16P	30.00	36.00

Unit: mm



3~16P

2P

# A2008 SERIES

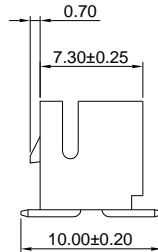
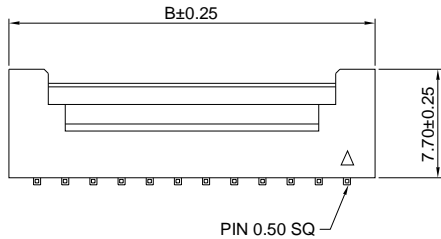
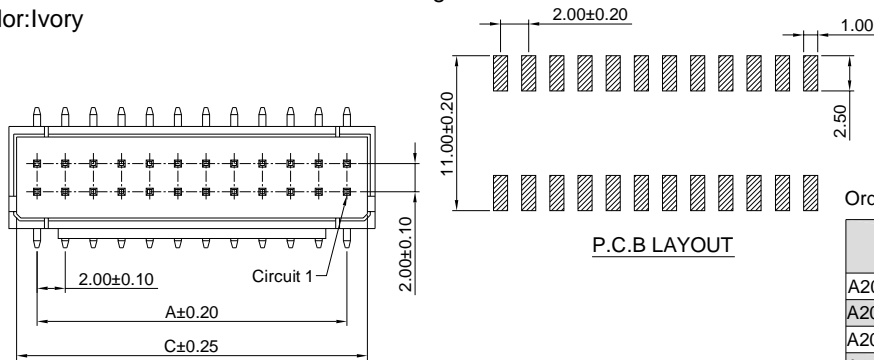
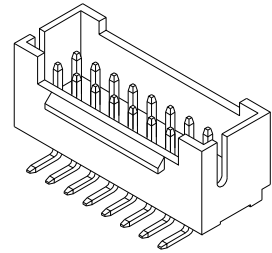
2.00mm pitch wire to board connector

## A2008WV-S-2

2.00mm pitch 180° Dual Row Wafer-SMT TYPE

### Reference Informations:

- \*Material:Pin:Brass/Tin over Nickel  
Insulator:Nylon6T,UL94V-0
- \*Mates with A2008 series Dual Row Housing
- \*Color:Ivory



### Ordering Information & Dimensions:

PART NO.	Dimensions		
	A	B	C
A2008WV-S-2x3P	4.00	8.00	6.80
A2008WV-S-2x4P	6.00	10.00	8.80
A2008WV-S-2x5P	8.00	12.00	10.80
A2008WV-S-2x6P	10.00	14.00	12.80
A2008WV-S-2x7P	12.00	16.00	14.80
A2008WV-S-2x8P	14.00	18.00	16.80
A2008WV-S-2x9P	16.00	20.00	18.80
A2008WV-S-2x10P	18.00	22.00	20.80
A2008WV-S-2x11P	20.00	24.00	22.80
A2008WV-S-2x12P	22.00	26.00	24.80
A2008WV-S-2x13P	24.00	28.00	26.80
A2008WV-S-2x14P	26.00	30.00	28.80
A2008WV-S-2x15P	28.00	32.00	30.80
A2008WV-S-2x16P	30.00	34.00	32.80
A2008WV-S-2x20P	38.00	42.00	40.80

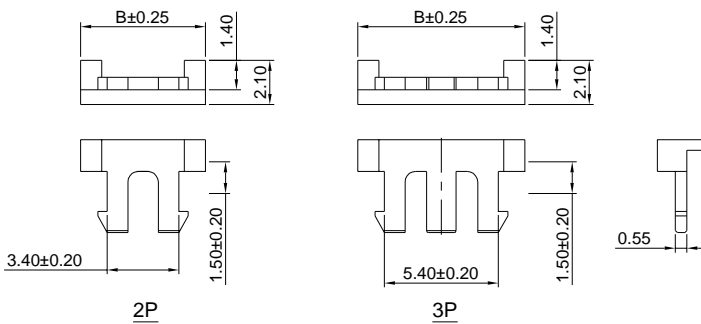
Unit: mm

## A2008S

2.00mm pitch Seal

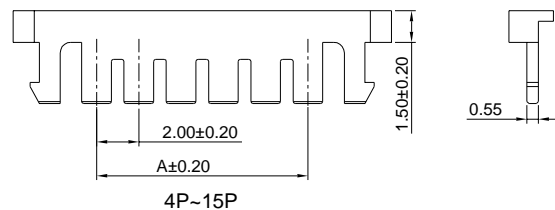
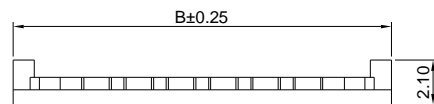
### Reference Informations:

- \*Material:Nylon 66,UL94V-2
- \*Use in A2008 series Housing
- \*Color:Brick red



2P

3P



4P~15P

### Ordering Information & Dimensions:

PART NO.	Dimensions	
	A	B
A2008S-2P	3.40	5.90
A2008S-3P	5.40	7.90
A2008S-4P	7.40	9.90
A2008S-5P	9.40	11.90
A2008S-6P	11.40	13.90
A2008S-7P	13.40	15.90
A2008S-8P	15.40	17.90
A2008S-9P	17.40	19.90
A2008S-10P	19.40	21.90
A2008S-11P	21.40	23.90
A2008S-12P	23.40	25.90
A2008S-13P	25.40	27.90
A2008S-14P	27.40	29.90
A2008S-15P	29.40	31.90

Unit: mm