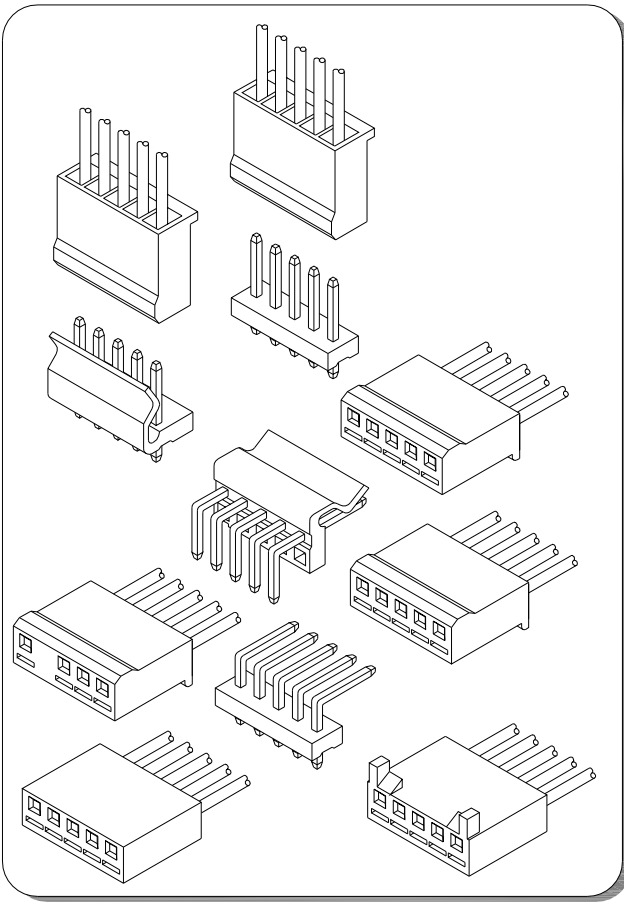


# A3964 SERIES

3.96mm pitch wire to board connector



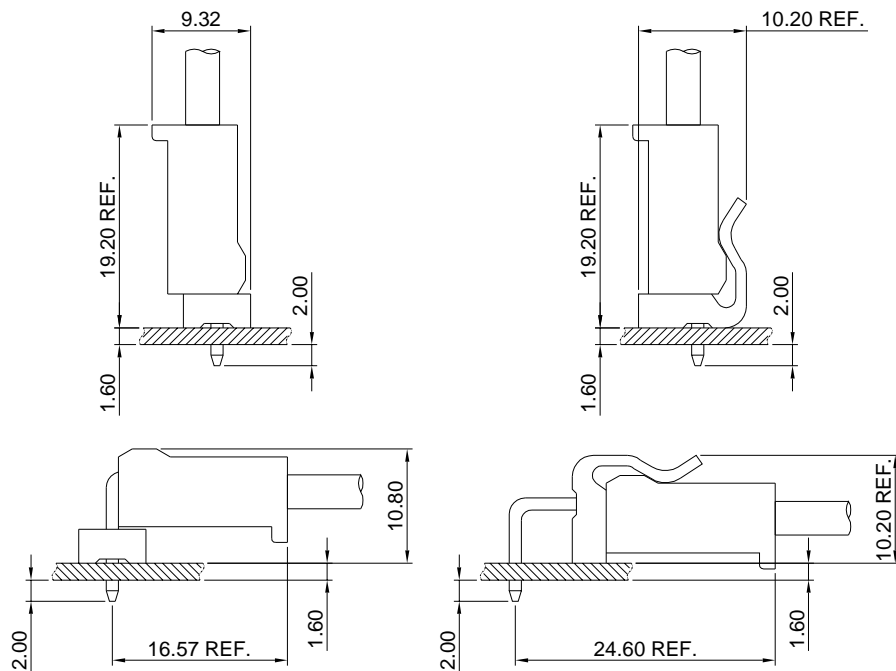
## Specifications

- Current rating: 7A AC, DC
- Voltage rating: 250V AC, DC
- Temperature range: -40°C ~ +105°C
- Contact resistance: 10mΩ Max.
- Insulation resistance: 1000MΩ Min.
- Withstanding voltage: 1500V AC/minute
- \*Compliant with RoHS and REACH\*
- \*Meet the HF/Halogen Free, GWT/Glow wire Test (IEC60335-1) request, need to customize\*
- \*Contact for details\*

## Standards



## Assembly layout



# A3964 SERIES

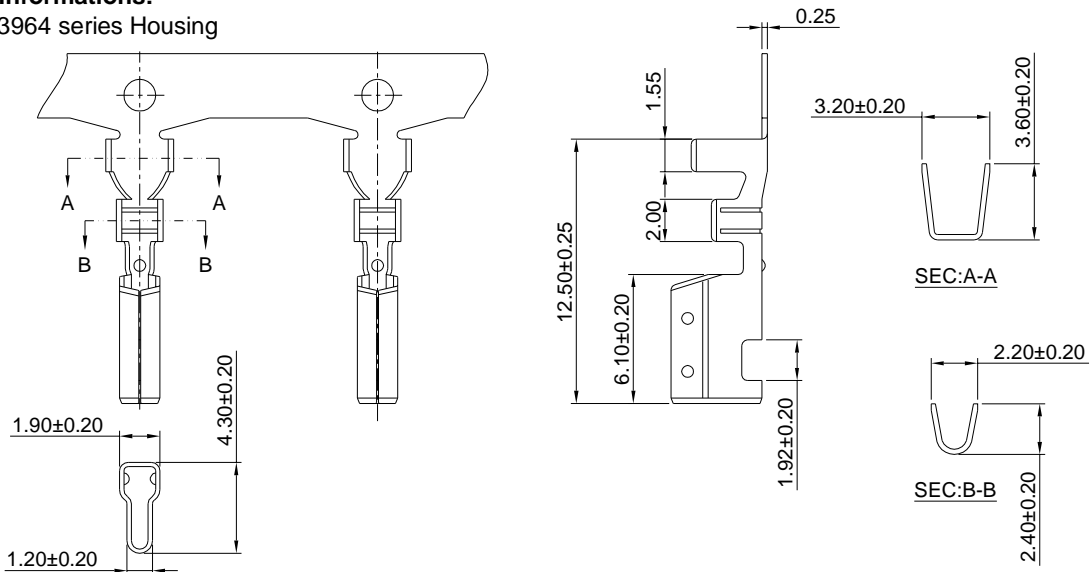
3.96mm pitch wire to board connector

## A3964-T

3.96mm pitch Crimp Terminal

### Reference Informations:

\*Used in A3964 series Housing



### Ordering information & Specifications:

Unit:mm

Part NO.	Wire Range	Insulation O.D.	Material	Finish	Qty/reel
A3964-TB	AWG#18-#24	3.20mm(max)	Brass	Tin over Nickel	5,000 PCS
A3964-TP	AWG#18-#24	3.20mm(max)	Phosphor Bronze	Tin over Nickel	5,000 PCS
A3964-GB	AWG#18-#24	3.20mm(max)	Brass	Gold over Nickel	5,000 PCS
A3964-GP	AWG#18-#24	3.20mm(max)	Phosphor Bronze	Gold over Nickel	5,000 PCS

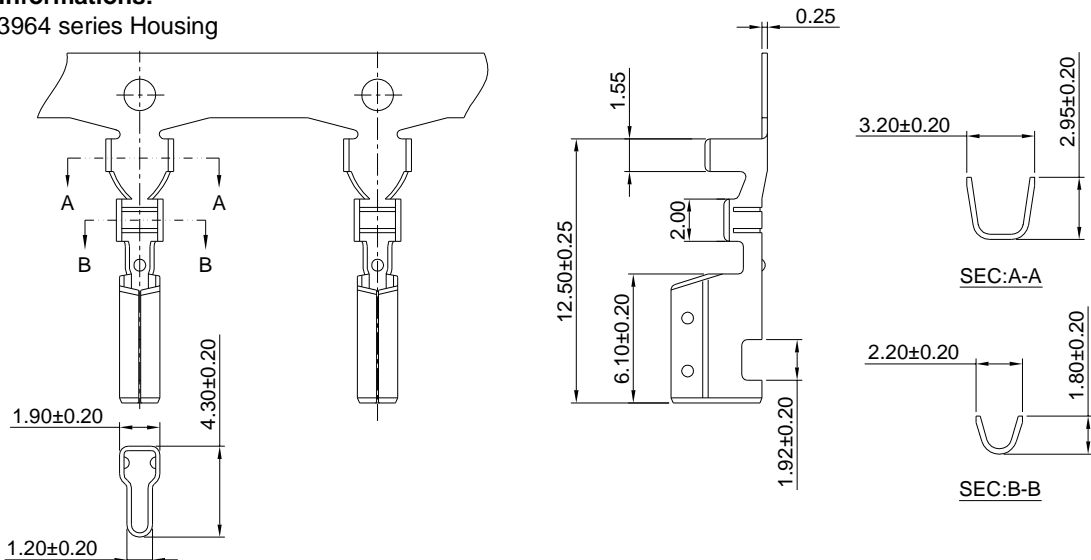
Optional Gold plating available but MOQ requested

## A3964-T-L

3.96mm pitch Crimp Terminal

### Reference Informations:

\*Used in A3964 series Housing



### Ordering information & Specifications:

Unit:mm

Part NO.	Wire Range	Insulation O.D.	Material	Finish	Qty/reel
A3964-TB-L	AWG#22-#28	2.60mm(max)	Brass	Tin over Nickel	5,000 PCS
A3964-TP-L	AWG#22-#28	2.60mm(max)	Phosphor Bronze	Tin over Nickel	5,000 PCS
A3964-GB-L	AWG#22-#28	2.60mm(max)	Brass	Gold over Nickel	5,000 PCS
A3964-GP-L	AWG#22-#28	2.60mm(max)	Phosphor Bronze	Gold over Nickel	5,000 PCS

# A3964 SERIES

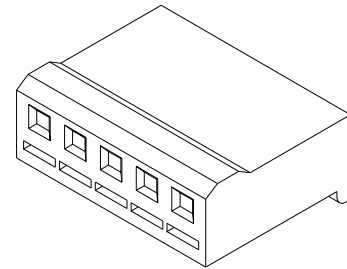
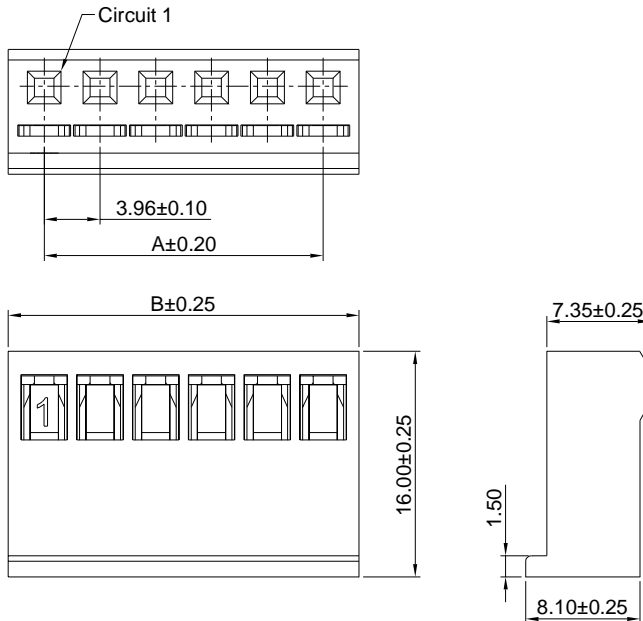
3.96mm pitch wire to board connector

## A3964H

3.96mm pitch Housing

### Reference Informations:

- \*Material:Nylon 66,UL94V-2
- \*Suitable A3964 series Terminal
- \*Mates with A3964 series Wafer
- \*Color:Natural



### Ordering Information & Dimensions:

PART NO.	Dimensions	
	A	B
A3964H-2P	3.96	9.06
A3964H-3P	7.92	13.02
A3964H-4P	11.88	16.98
A3964H-5P	15.84	20.94
A3964H-6P	19.80	24.90
A3964H-7P	23.76	28.86
A3964H-8P	27.72	32.82
A3964H-9P	31.68	36.78
A3964H-10P	35.64	40.74
A3964H-11P	39.60	44.70
A3964H-12P	43.56	48.66

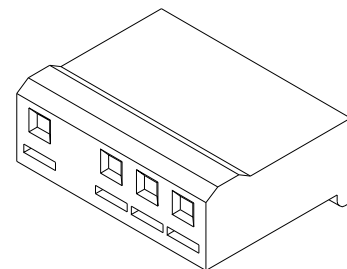
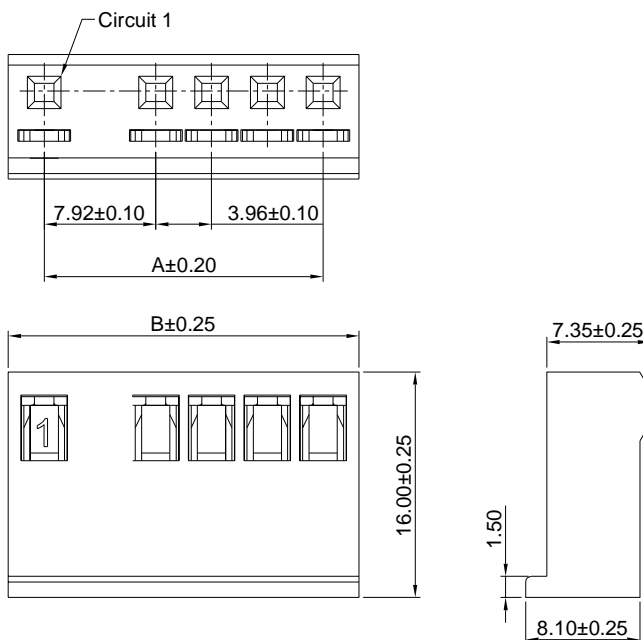
Unit: mm

## A3964H-A

7.92~3.96mm pitch Housing

### Reference Informations:

- \*Material:Nylon 66,UL94V-2
- \*Suitable A3964 series Terminal
- \*Mates with A3964 series Wafer
- \*Color:Natural



### Ordering Information & Dimensions:

PART NO.	Dimensions	
	A	B
A3964H-3P-A	7.92	13.02
A3964H-4P-A	11.88	16.98
A3964H-5P-A	15.84	20.94
A3964H-6P-A	19.80	24.90
A3964H-7P-A	23.76	28.86
A3964H-8P-A	27.72	32.82
A3964H-9P-A	31.68	36.78
A3964H-10P-A	35.64	40.74
A3964H-11P-A	39.60	44.70
A3964H-12P-A	43.56	48.66

Unit: mm

# A3964 SERIES

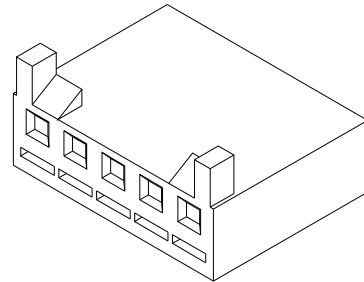
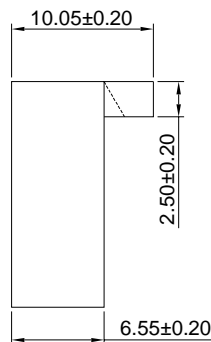
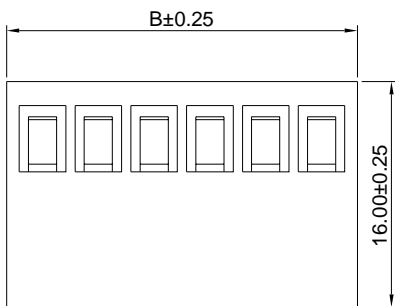
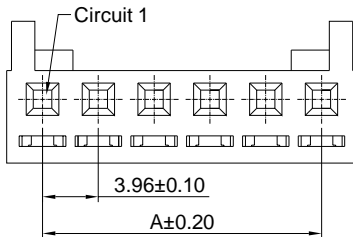
3.96mm pitch wire to board connector

## A3964H-B

3.96mm pitch Housing

### Reference Informations:

- \*Material:Nylon 66,UL94V-0
- \*Suitable A3964 series Terminal
- \*Color:White



### Ordering Information & Dimensions:

PART NO.	Dimensions	
	A	B
A3964H-2P-B	3.96	9.06
A3964H-3P-B	7.92	13.02
A3964H-4P-B	11.88	16.98
A3964H-5P-B	15.84	20.94
A3964H-6P-B	19.80	24.90
A3964H-7P-B	23.76	28.86
A3964H-8P-B	27.72	32.82
A3964H-9P-B	31.68	36.78
A3964H-10P-B	35.64	40.74
A3964H-11P-B	39.60	44.70
A3964H-12P-B	43.56	48.66

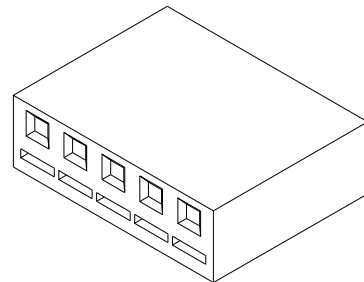
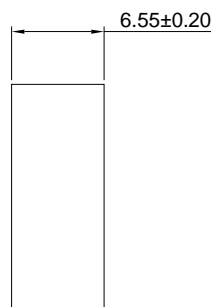
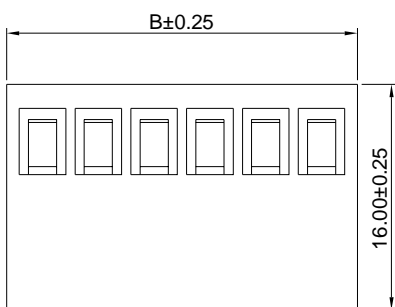
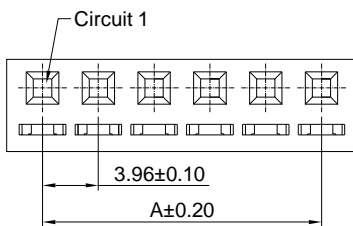
Unit: mm

## A3964H-C

3.96mm pitch Housing

### Reference Informations:

- \*Material:Nylon 66,UL94V-0
- \*Suitable A3964 series Terminal
- \*Mates with A3964 series Wafer
- \*Color:White



### Ordering Information & Dimensions:

PART NO.	Dimensions	
	A	B
A3964H-2P-C	3.96	9.06
A3964H-3P-C	7.92	13.02
A3964H-4P-C	11.88	16.98
A3964H-5P-C	15.84	20.94
A3964H-6P-C	19.80	24.90
A3964H-7P-C	23.76	28.86
A3964H-8P-C	27.72	32.82
A3964H-9P-C	31.68	36.78
A3964H-10P-C	35.64	40.74
A3964H-11P-C	39.60	44.70
A3964H-12P-C	43.56	48.66

Unit: mm

# A3964 SERIES

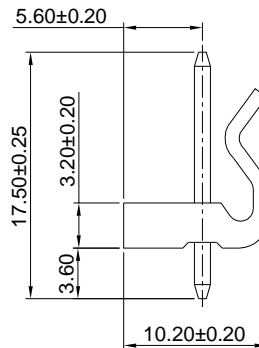
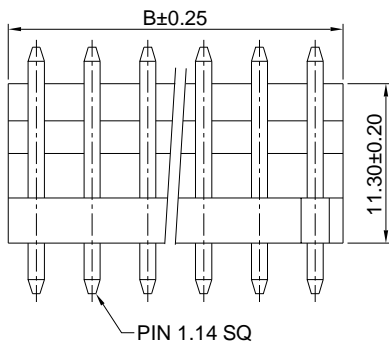
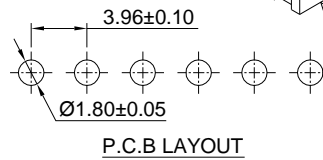
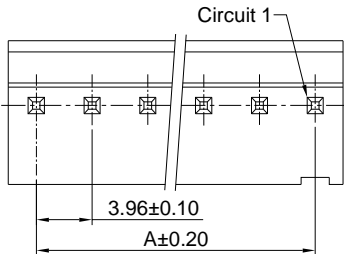
3.96mm pitch wire to board connector

## A3964WV

3.96mm pitch 180° Wafer

### Reference Informations:

- \*Material: Pin: Brass/Tin over Nickel  
Insulator: Nylon 66, UL94V-2
- \*Mates with A3961 or A3964 series Housing
- \*Color: Natual



### Ordering Information & Dimensions:

PART NO.	Dimensions	
	A	B
A3964WV-2P	3.96	7.92
A3964WV-3P	7.92	11.88
A3964WV-4P	11.88	15.84
A3964WV-5P	15.84	19.80
A3964WV-6P	19.80	23.76
A3964WV-7P	23.76	27.72
A3964WV-8P	27.72	31.68
A3964WV-9P	31.68	35.64
A3964WV-10P	35.64	39.60
A3964WV-11P	39.60	43.56
A3964WV-12P	43.56	47.52
A3964WV-13P	47.52	51.48
A3964WV-14P	51.48	55.44
A3964WV-15P	55.44	59.40
A3964WV-16P	59.40	63.36
A3964WV-17P	63.36	67.32
A3964WV-18P	67.32	71.28
A3964WV-19P	71.28	75.24
A3964WV-20P	75.24	79.20

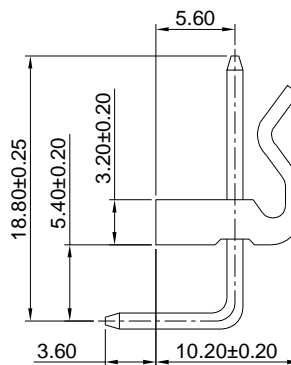
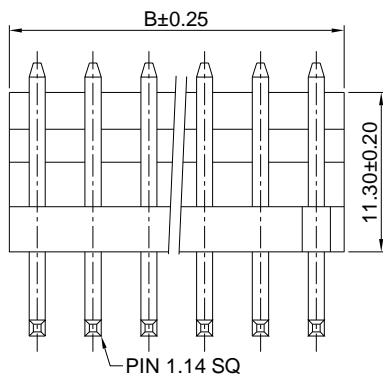
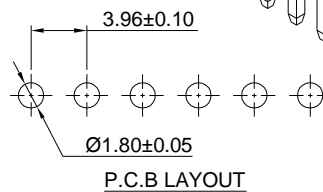
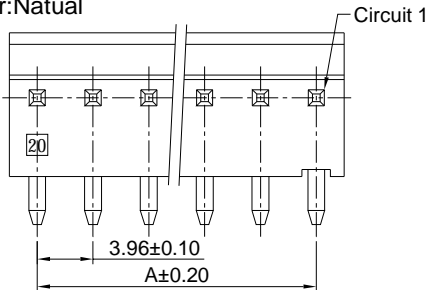
Unit: mm

## A3964WR

3.96mm pitch 90° Wafer

### Reference Informations:

- \*Material: Pin: Brass/Tin over Nickel  
Insulator: Nylon 66, UL94V-2
- \*Mates with A3961 or A3964 series Housing
- \*Color: Natual



### Ordering Information & Dimensions:

PART NO.	Dimensions	
	A	B
A3964WR-2P	3.96	7.92
A3964WR-3P	7.92	11.88
A3964WR-4P	11.88	15.84
A3964WR-5P	15.84	19.80
A3964WR-6P	19.80	23.76
A3964WR-7P	23.76	27.72
A3964WR-8P	27.72	31.68
A3964WR-9P	31.68	35.64
A3964WR-10P	35.64	39.60
A3964WR-11P	39.60	43.56
A3964WR-12P	43.56	47.52
A3964WR-13P	47.52	51.48
A3964WR-14P	51.48	55.44
A3964WR-15P	55.44	59.40
A3964WR-16P	59.40	63.36
A3964WR-17P	63.36	67.32
A3964WR-18P	67.32	71.28
A3964WR-19P	71.28	75.24
A3964WR-20P	75.24	79.20

Unit: mm

# A3964 SERIES

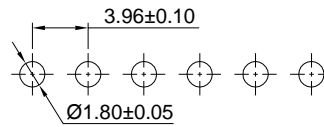
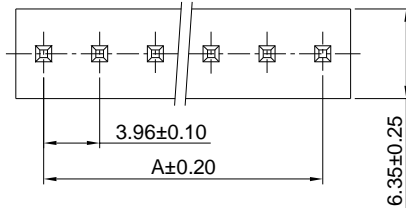
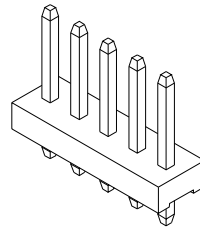
3.96mm pitch wire to board connector

## A3964WVA

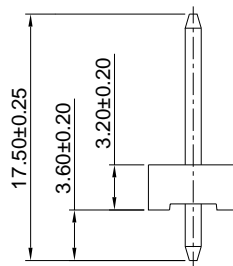
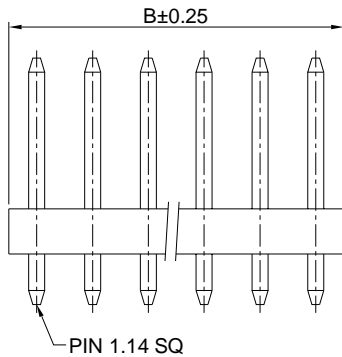
3.96mm pitch 180° Wafer

### Reference Informations:

- \*Material: Pin: Brass/Tin over Nickel  
Insulator: Nylon 66, UL94V-2
- \*Mates with A3961 or A3964 series Housing
- \*Color: Natual



P.C.B LAYOUT



### Ordering Information & Dimensions:

PART NO.	Dimensions	
	A	B
A3964WVA-2P	3.96	7.92
A3964WVA-3P	7.92	11.88
A3964WVA-4P	11.88	15.84
A3964WVA-5P	15.84	19.80
A3964WVA-6P	19.80	23.76
A3964WVA-7P	23.76	27.72
A3964WVA-8P	27.72	31.68
A3964WVA-9P	31.68	35.64
A3964WVA-10P	35.64	39.60
A3964WVA-11P	39.60	43.56
A3964WVA-12P	43.56	47.52
A3964WVA-13P	47.52	51.48
A3964WVA-14P	51.48	55.44
A3964WVA-15P	55.44	59.40
A3964WVA-16P	59.40	63.36
A3964WVA-17P	63.36	67.32
A3964WVA-18P	67.32	71.28
A3964WVA-19P	71.28	75.24
A3964WVA-20P	75.24	79.20

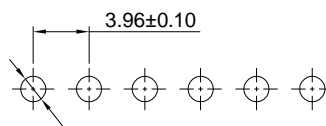
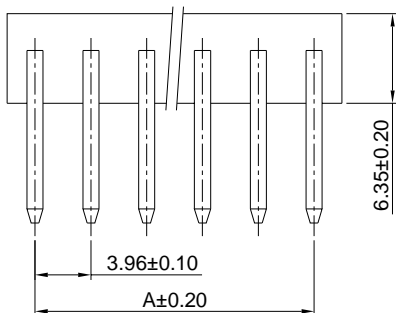
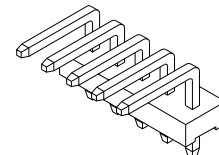
Unit: mm

## A3964WRA

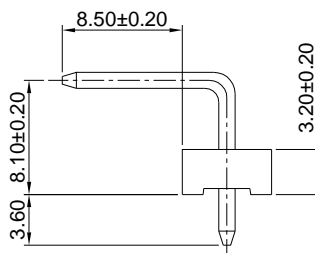
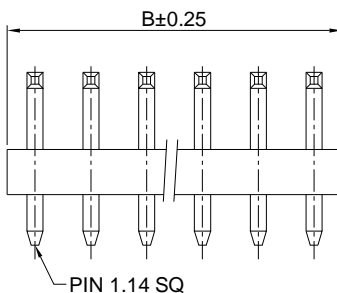
3.96mm pitch 90° Wafer

### Reference Informations:

- \*Material: Pin: Brass/Tin over Nickel  
Insulator: Nylon 66, UL94V-2
- \*Mates with A3961 or A3964 series Housing
- \*Color: Natual



P.C.B LAYOUT



### Ordering Information & Dimensions:

PART NO.	Dimensions	
	A	B
A3964WRA-2P	3.96	7.92
A3964WRA-3P	7.92	11.88
A3964WRA-4P	11.88	15.84
A3964WRA-5P	15.84	19.80
A3964WRA-6P	19.80	23.76
A3964WRA-7P	23.76	27.72
A3964WRA-8P	27.72	31.68
A3964WRA-9P	31.68	35.64
A3964WRA-10P	35.64	39.60
A3964WRA-11P	39.60	43.56
A3964WRA-12P	43.56	47.52
A3964WRA-13P	47.52	51.48
A3964WRA-14P	51.48	55.44
A3964WRA-15P	55.44	59.40
A3964WRA-16P	59.40	63.36
A3964WRA-17P	63.36	67.32
A3964WRA-18P	67.32	71.28
A3964WRA-19P	71.28	75.24
A3964WRA-20P	75.24	79.20

Unit: mm

# A3964 SERIES

3.96mm pitch wire to board connector

## A3964WV-A

3.96mm pitch 180° Wafer

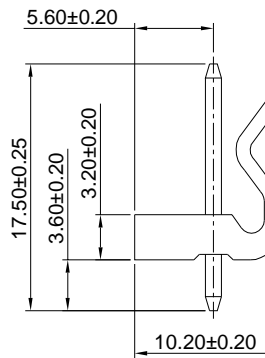
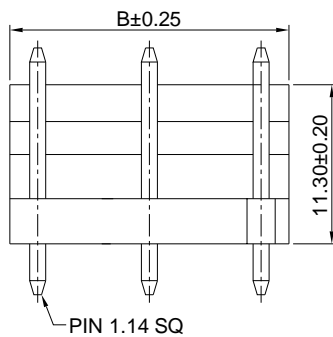
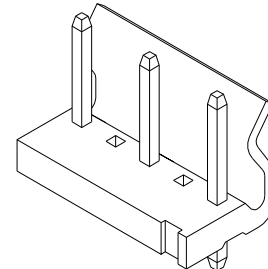
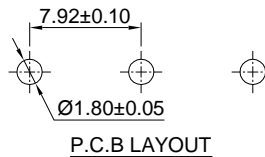
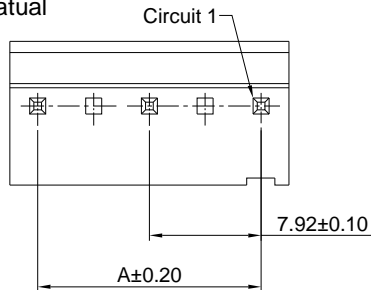
### Reference Informations:

\*Material:Pin:Brass/Tin over Nickel

Insulator:Nylon 66,UL94V-2

\*Mates with A3961 or A3964 series Housing

\*Color:Natural



### Ordering Information & Dimensions:

PART NO.	Dimensions	
	A	B
A3964WV-3P-A	7.92	11.88
A3964WV-5P-A	15.84	19.80
A3964WV-7P-A	23.76	27.72
A3964WV-9P-A	31.68	35.64
A3964WV-11P-A	39.60	43.56
A3964WV-13P-A	47.52	51.48
A3964WV-15P-A	55.44	59.40
A3964WV-17P-A	63.36	67.32
A3964WV-19P-A	71.28	75.24

Unit: mm

## A3961WR-A

3.96mm pitch 90° Wafer

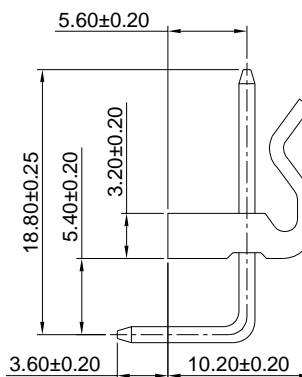
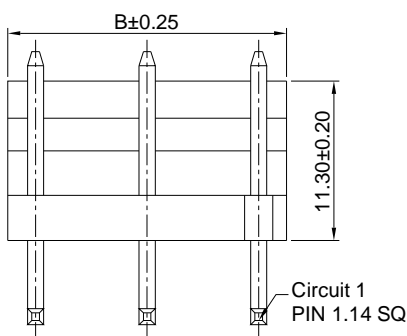
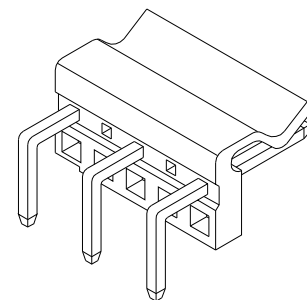
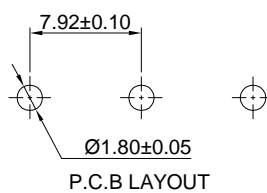
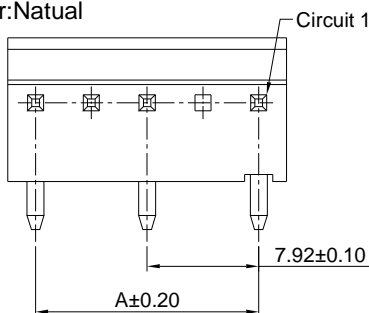
### Reference Informations:

\*Material:Pin:Brass/Tin over Nickel

Insulator:Nylon 66,UL94V-2

\*Mates with A3961 or A3964 series Housing

\*Color:Natural



### Ordering Information & Dimensions:

PART NO.	Dimensions	
	A	B
A3964WR-3P-A	7.92	11.88
A3964WR-5P-A	15.84	19.80
A3964WR-7P-A	23.76	27.72
A3964WR-9P-A	31.68	35.64
A3964WR-11P-A	39.60	43.56
A3964WR-13P-A	47.52	51.48
A3964WR-15P-A	55.44	59.40
A3964WR-17P-A	63.36	67.32
A3964WR-19P-A	71.28	75.24

Unit: mm

# A3964 SERIES

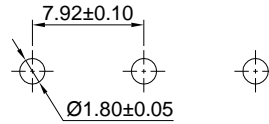
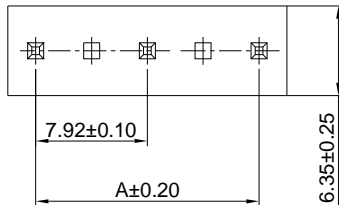
3.96mm pitch wire to board connector

## A3964WVA-A

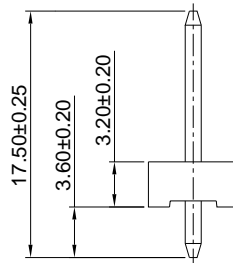
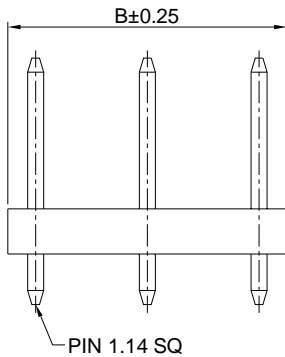
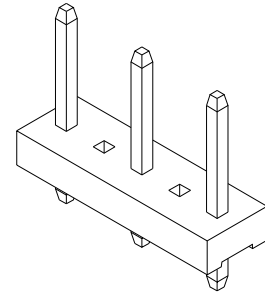
3.96mm pitch 180° Wafer

### Reference Informations:

- \*Material: Pin: Brass/Tin over Nickel  
Insulator: Nylon 66, UL94V-2
- \*Mates with A3961 or A3964 series Housing
- \*Color: Natural



P.C.B LAYOUT



### Ordering Information & Dimensions:

PART NO.	Dimensions	
	A	B
A3964WVA-3P-A	7.92	11.88
A3964WVA-5P-A	15.84	19.80
A3964WVA-7P-A	23.76	27.72
A3964WVA-9P-A	31.68	35.64
A3964WVA-11P-A	39.60	43.56
A3964WVA-13P-A	47.52	51.48
A3964WVA-15P-A	55.44	59.40
A3964WVA-17P-A	63.36	67.32
A3964WVA-19P-A	71.28	75.24

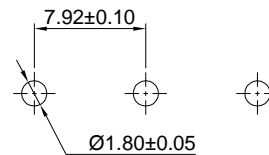
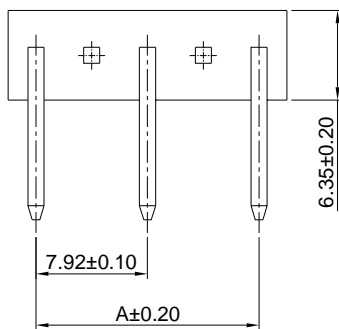
Unit: mm

## A3964WRA-A

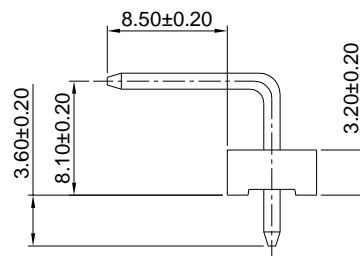
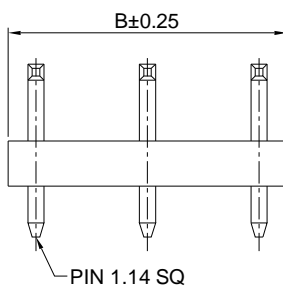
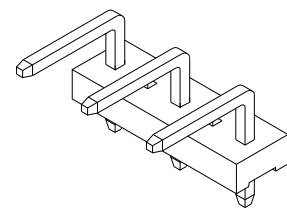
3.96mm pitch 90° Wafer

### Reference Informations:

- \*Material: Pin: Brass/Tin over Nickel  
Insulator: Nylon 66, UL94V-2
- \*Mates with A3961 or A3964 series Housing
- \*Color: Natural



P.C.B LAYOUT



### Ordering Information & Dimensions:

PART NO.	Dimensions	
	A	B
A3964WRA-3P-A	7.92	11.88
A3964WRA-5P-A	15.84	19.80
A3964WRA-7P-A	23.76	27.72
A3964WRA-9P-A	31.68	35.64
A3964WRA-11P-A	39.60	43.56
A3964WRA-13P-A	47.52	51.48
A3964WRA-15P-A	55.44	59.40
A3964WRA-17P-A	63.36	67.32
A3964WRA-19P-A	71.28	75.24

Unit: mm