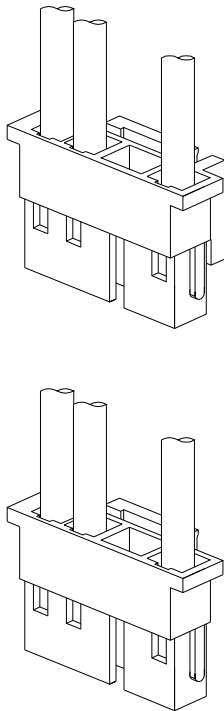


## A6525 SERIES

6.50~2.50mm pitch wire to board connector



### Specifications

Current rating:1A AC,DC

Voltage rating:1400V AC,DC

Temperature range:-40°C~+105°C

Contact resistance:10mΩMax.

Insulation resistance:1000MΩMin.

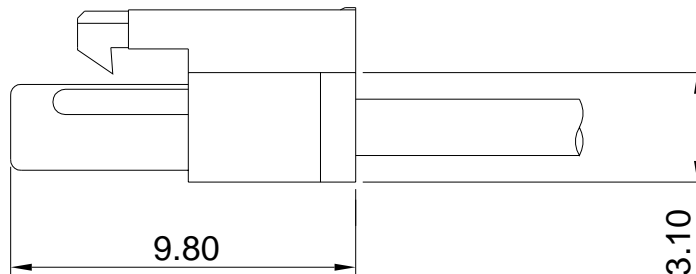
Withstanding voltage:3800V AC/minute

\*Compliant with RoHS and REACH\*

\*Meet the HF/Halogen Free,GWT/Glow wire Test (IEC60335-1) request,need to customize\*

\*Contact for details\*

### Assembly layout



# A6525 SERIES

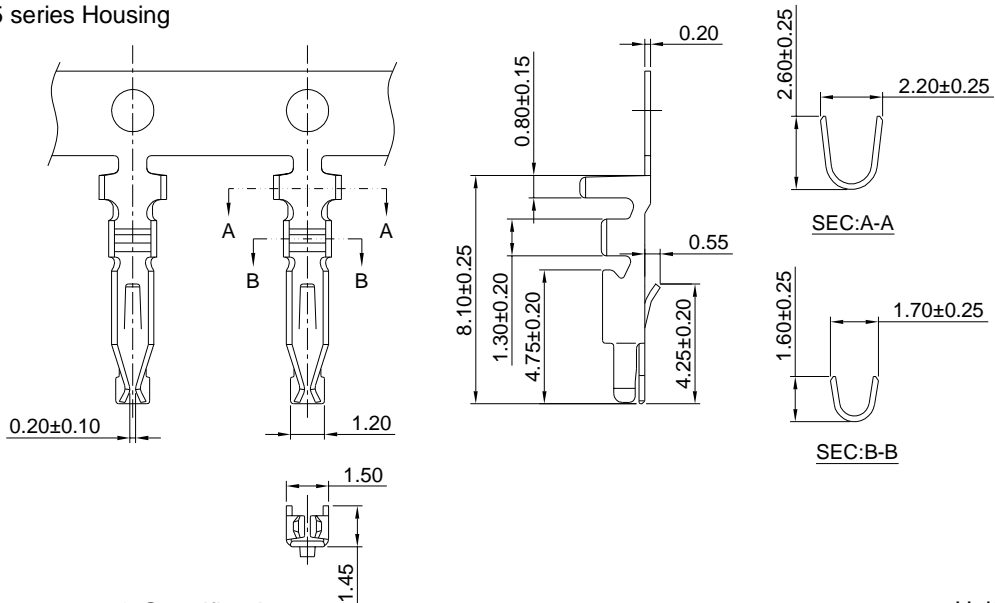
6.50~2.50mm pitch wire to board connector

## A6525-T

6.50~2.50mm pitch Crimp Terminal

### Reference Informations:

\*Used in A6525 series Housing



Ordering information & Specifications:

Unit:mm

Part NO	Wire Range	Insulation O.D.	Material	Finish	Qty/reel
A6525-TP	AWG#24-#28	1.60mm(max)	Phosphor Bronze	Tin over Nickel	10,000 PCS
A6525-GP	AWG#24-#28	1.60mm(max)	Phosphor Bronze	Gold over Nickel	10,000 PCS

Optional Gold plating available but MOQ requested

## A6525H-3P

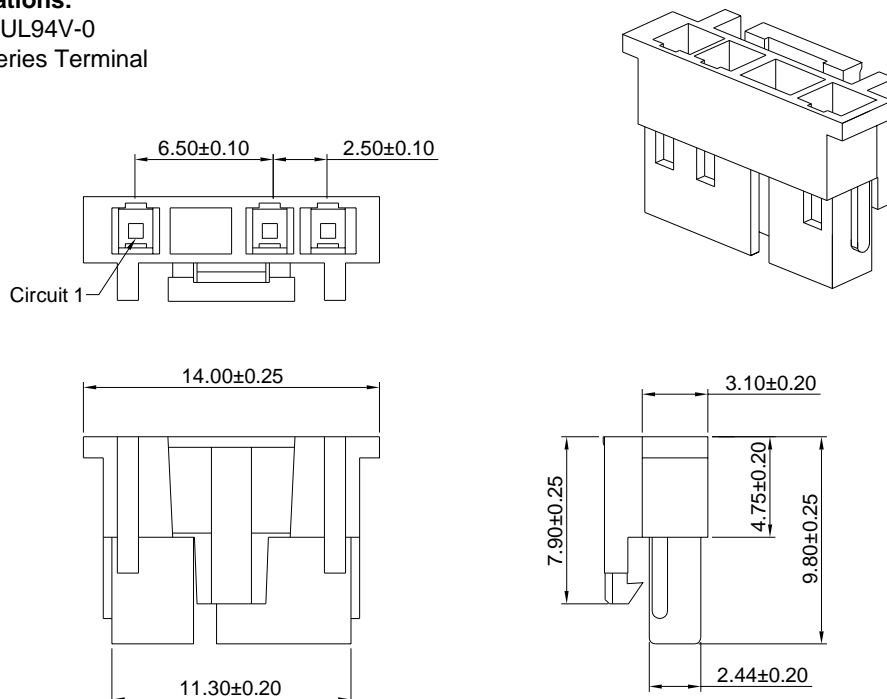
6.50~2.50mm pitch Housing

### Reference Informations:

\*Material:Nylon 66,UL94V-0

\*Suitable A6525 series Terminal

\*Color:White



Unit: mm

# A6525 SERIES

6.50~2.50mm pitch wire to board connector

## A6525HA-3P

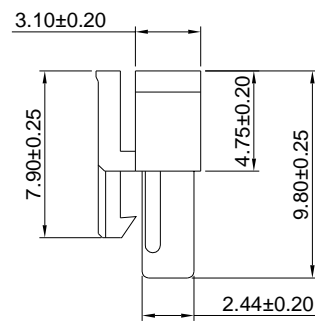
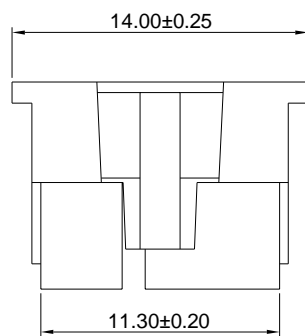
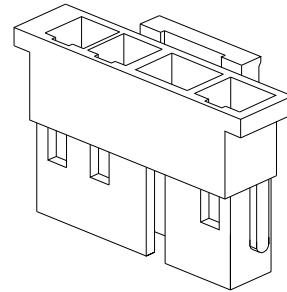
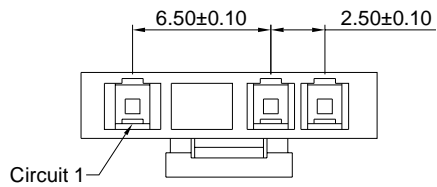
6.50~2.50mm pitch Housing

### Reference Informations:

\*Material:Nylon 66,UL94V-0

\*Suitable A6525 series Terminal

\*Color:White



Unit: mm