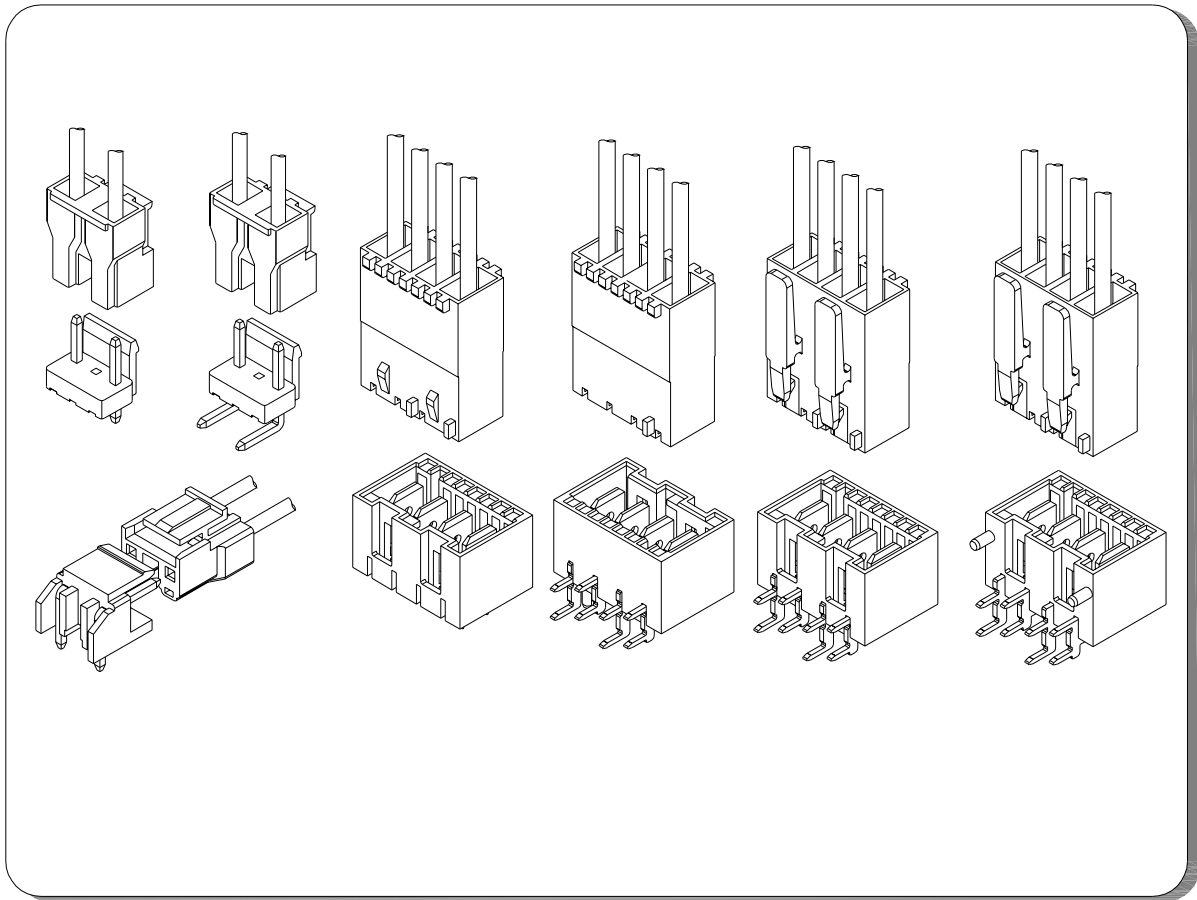


A7921 SERIES

7.92~5.00mm pitch wire to board connector



Specifications(Ordinary)

Current rating:10A AC,DC
 Voltage rating:250V AC,DC
 Temperature range:-40°C~+105°C
 Contact resistance:10mΩMax.
 Insulation resistance:1000MΩMin.
 Withstanding voltage:1500V AC/minute
 Meet the HF/Halogen Free,GWT/Glow wire Test (IEC60335-1) request,need to customize
 Contact for details

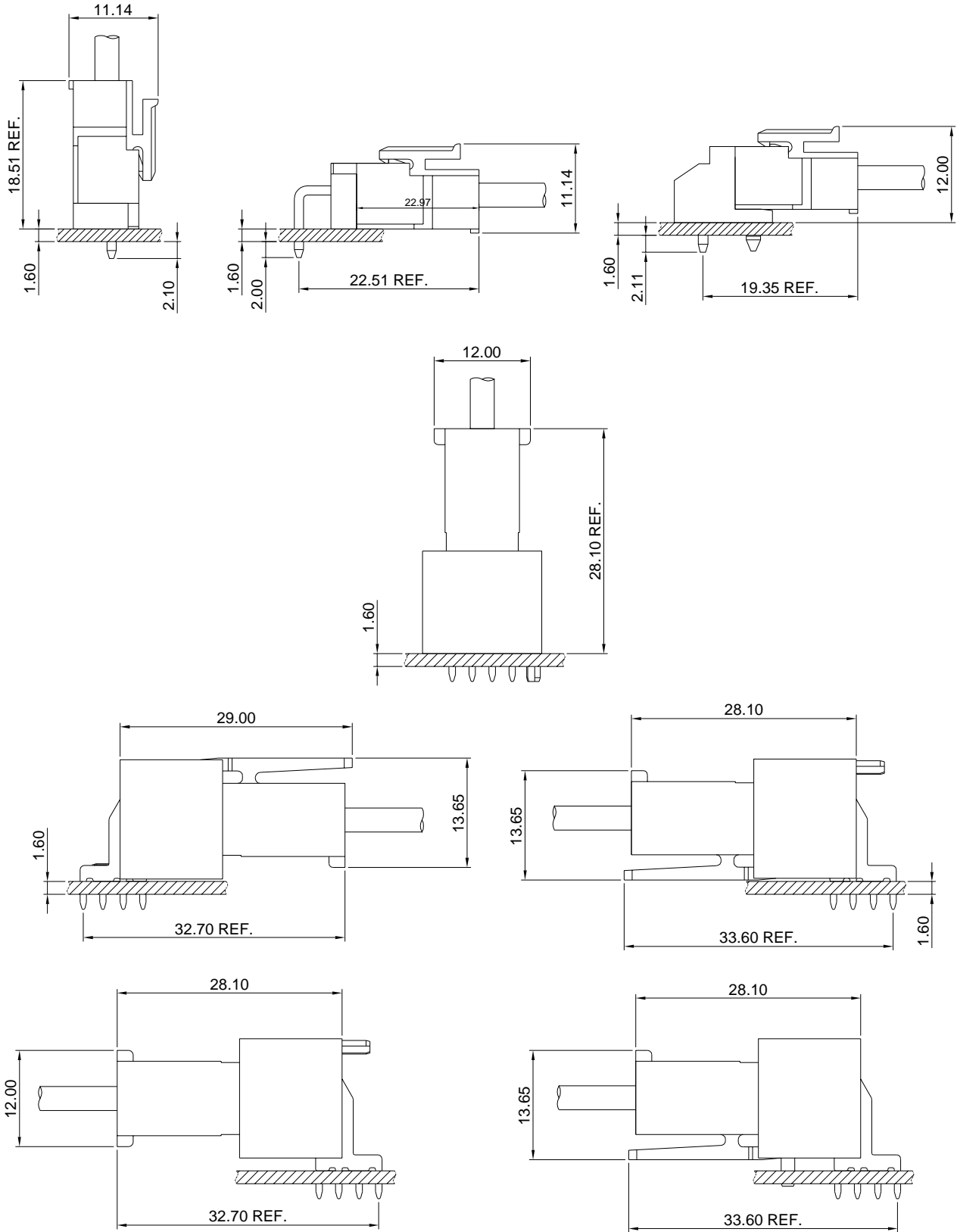
Specifications(Special)

Current rating:16A AC,DC
 Voltage rating:380V AC,DC
 Temperature range:-40°C~+105°C
 Contact resistance:20mΩMax.
 Insulation resistance:1000MΩMin.
 Withstanding voltage:1800V AC/minute
 Meet the HF/Halogen Free,GWT/Glow wire Test (IEC60335-1) request,need to customize
 Contact for details

Standards



Assembly layout



A7921 SERIES

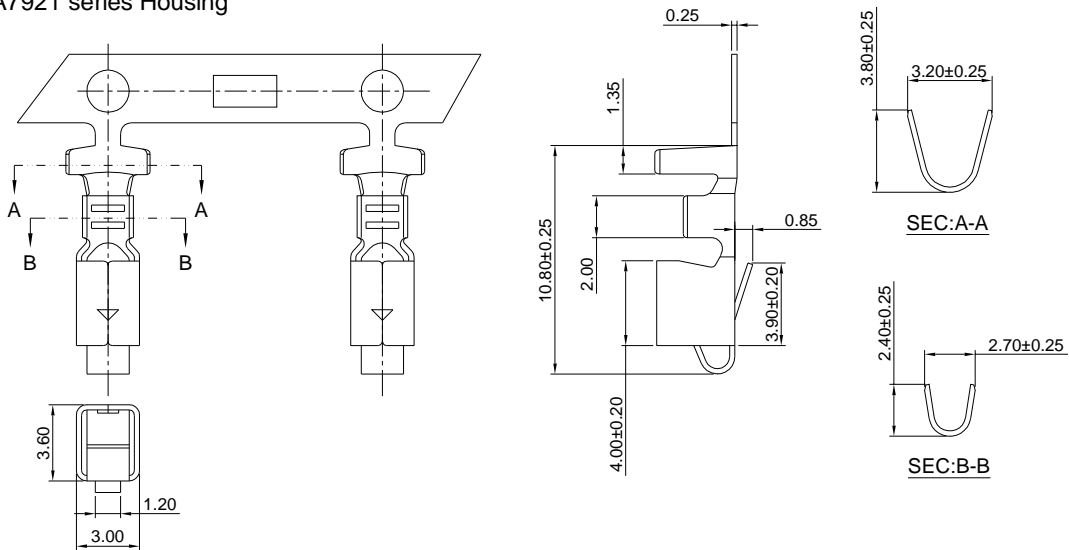
7.92mm pitch wire to board connector

A7921-T

7.92mm pitch Crimp Terminal

Reference Informations:

*Used in A7921 series Housing



Ordering information & Specifications:

Unit:mm

Part NO.	Wire Range	Insulation O.D.	Material	Finish	Qty/reel
A7921-TB	AWG#18-#22	3.00mm(max)	Brass	Tin over Nickel	4,000 PCS
A7921-TP	AWG#18-#22	3.00mm(max)	Phosphor Bronze	Tin over Nickel	4,000 PCS
A7921-GB	AWG#18-#22	3.00mm(max)	Brass	Gold over Nickel	4,000 PCS
A7921-GP	AWG#18-#22	3.00mm(max)	Phosphor Bronze	Gold over Nickel	4,000 PCS

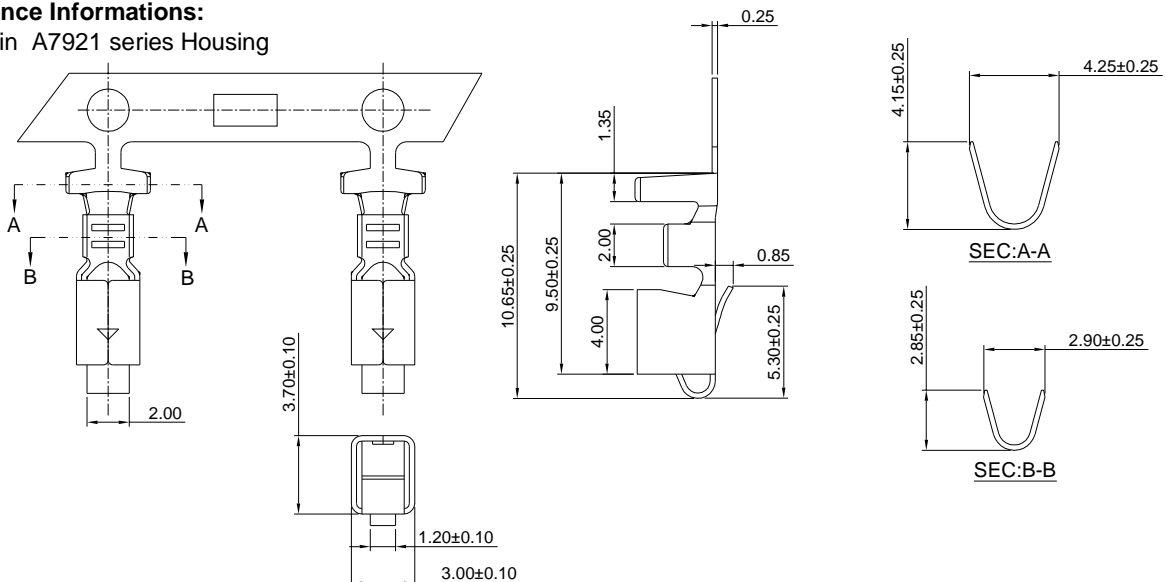
Optional Gold plating available but MOQ requested

A7921-T-H

7.92mm pitch Crimp Terminal

Reference Informations:

*Used in A7921 series Housing



Ordering information & Specifications:

Part NO.	Wire Range	Insulation O.D.	Material	Finish	Qty/reel
A7921-TB-H	AWG#16-#20	3.40mm(max)	Brass	Tin over Nickel	4,000 PCS
A7921-TP-H	AWG#16-#20	3.40mm(max)	Phosphor Bronze	Tin over Nickel	4,000 PCS
A7921-GB-H	AWG#16-#20	3.40mm(max)	Brass	Gold over Nickel	4,000 PCS
A7921-GP-H	AWG#16-#20	3.40mm(max)	Phosphor Bronze	Gold over Nickel	4,000 PCS

Optional Gold plating available but MOQ requested

A7921 SERIES

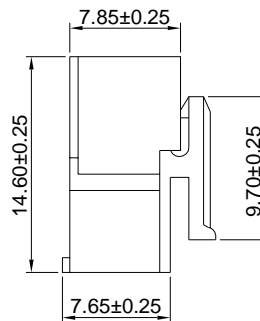
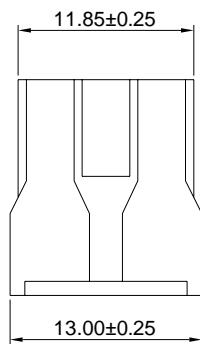
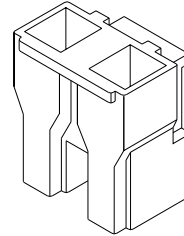
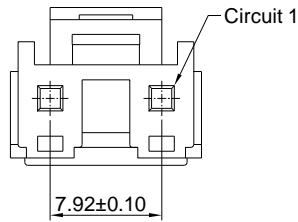
7.92mm pitch wire to board connector

A7921H-2P

7.92mm pitch Housing

Reference Informations:

- *Material:Nylon 66,UL94V-0
- *Suitable A7921 series Terminal
- *Mates with A7921 series Wafer
- *Color:White



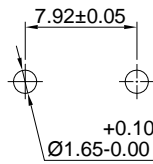
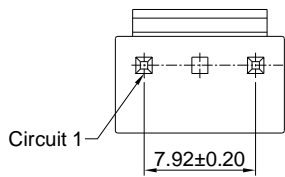
Unit: mm

A7921WV-2P

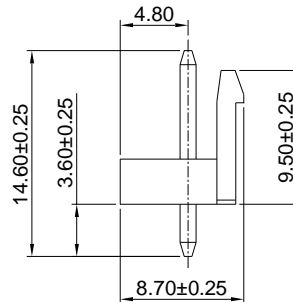
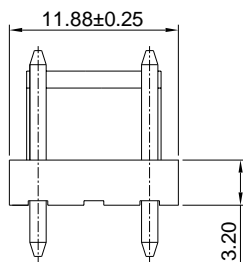
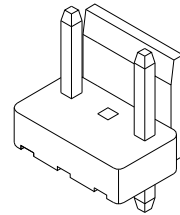
7.92mm pitch 180° Wafer

Reference Informations:

- *Material:Pin:Brass/Tin over Nickel
Insulator:Nylon 66,UL94V-0
- *Mates with A7921 series Housing or A3963 series Housing
- *Color:White



P.C.B LAYOUT



Unit: mm

A7921 SERIES

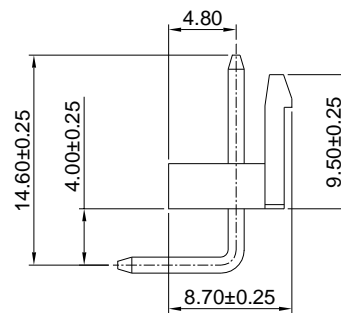
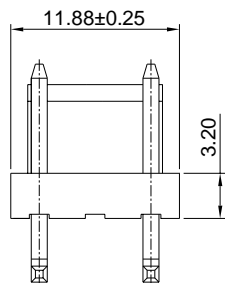
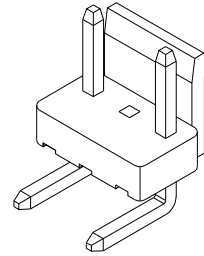
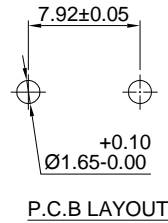
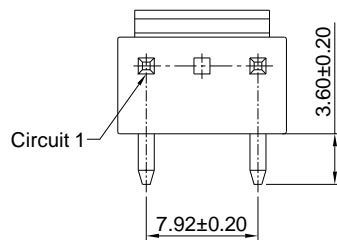
7.92mm pitch wire to board connector

A7921WR-2P

7.92mm pitch 90° Wafer

Reference Informations:

- *Material:Pin:Brass/Tin over Nickel
Insulator:Nylon 66,UL94V-0
- *Mates with A7921 series Housing or A3963 series Housing
- *Color:White



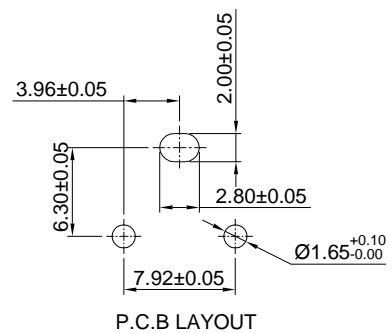
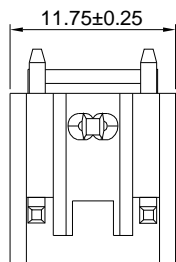
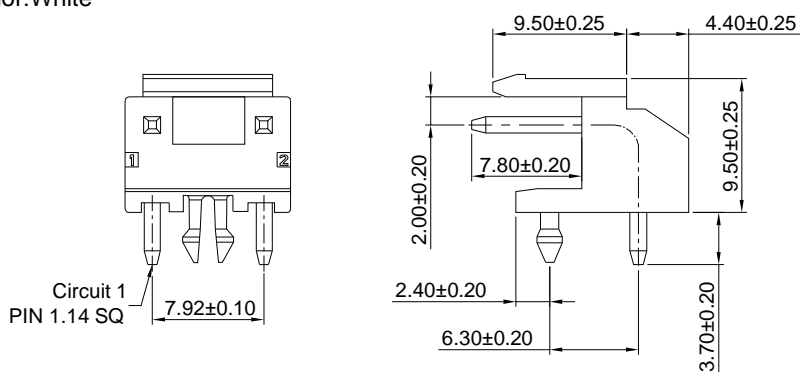
Unit: mm

A7921WR-F-2P

7.92mm pitch 90° Wafer

Reference Informations:

- *Material:Pin:Brass/Tin over Nickel
Insulator:PBT,UL94V-0
- *Mates with A7921 series Housing or A3963 series Housing
- *Color:White



Unit: mm

A7921 SERIES

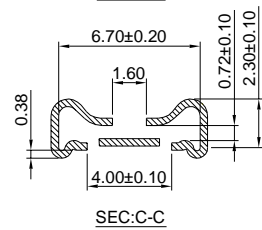
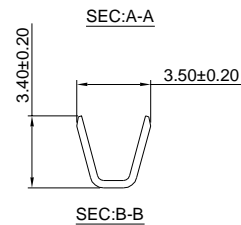
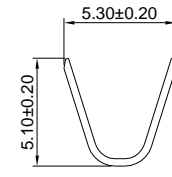
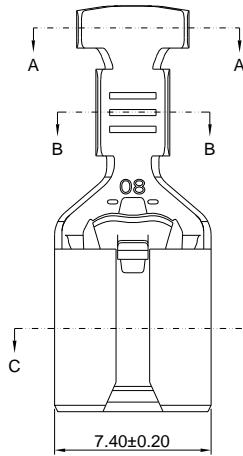
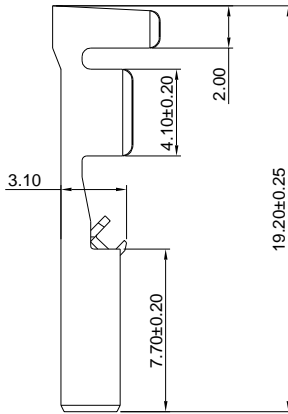
5.00mm pitch wire to board connector

A7921-T-A

5.00mm pitch Crimp Terminal

Reference Informations:

*Used in A7921HC A7921HD series Housing



Ordering information & Specifications:

Unit:mm

Part NO.	Wire Range	Insulation O.D.	Material	Finish	Qty/reel
A7921-TB-A	AWG#14-#18	3.30mm(max)	Brass	Tin over Nickel	5,000 PCS
A7921-TP-A	AWG#14-#18	3.30mm(max)	Phosphor Bronze	Tin over Nickel	5,000 PCS
A7921-SUS-A	AWG#14-#18	3.30mm(max)	SUS 304	-----	5,000 PCS

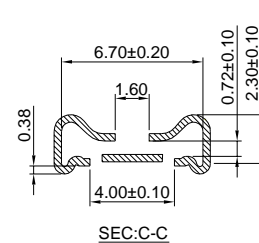
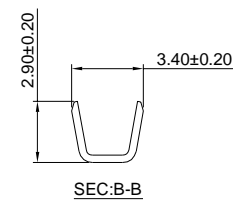
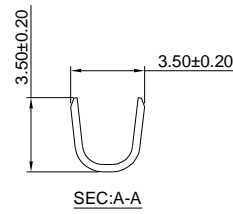
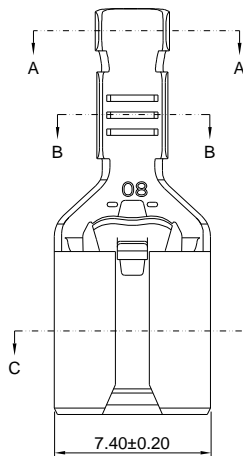
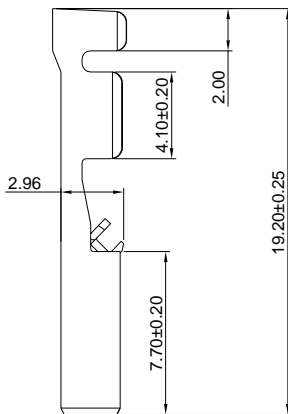
Optional Gold plating available but MOQ requested

A7921-T-A-L

5.00mm pitch Crimp Terminal

Reference Informations:

*Used in A7921HC A7921HD series Housing



Ordering information & Specifications:

Unit:mm

Part NO.	Wire Range	Insulation O.D.	Material	Finish	Qty/reel
A7921-TB-A-L	AWG#20-#22	1.80mm(max)	Brass	Tin over Nickel	5,000 PCS
A7921-TP-A-L	AWG#20-#22	1.80mm(max)	Phosphor Bronze	Tin over Nickel	5,000 PCS
A7921-SUS-A-L	AWG#20-#22	1.80mm(max)	SUS 304	-----	5,000 PCS

Optional Gold plating available but MOQ requested

A7921 SERIES

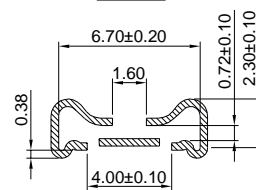
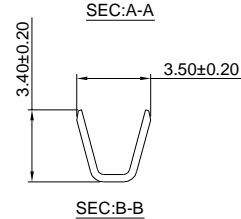
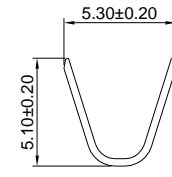
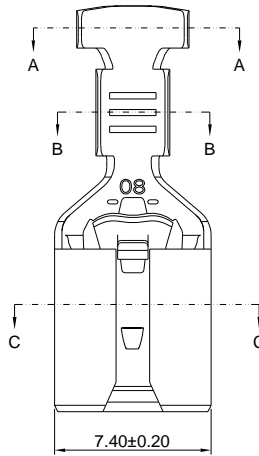
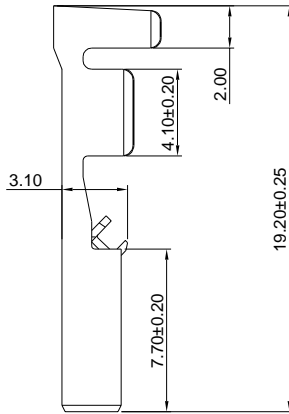
5.00mm pitch wire to board connector

A7921-T-B

5.00mm pitch Crimp Terminal

Reference Informations:

*Used in A7921HC A7921HD series Housing



Ordering information & Specifications:

Unit:mm

Part NO.	Wire Range	Insulation O.D.	Material	Finish	Qty/reel
A7921-TB-B	AWG#14-#18	3.30mm(max)	Brass	Tin over Nickel	5,000 PCS
A7921-TP-B	AWG#14-#18	3.30mm(max)	Phosphor Bronze	Tin over Nickel	5,000 PCS
A7921-SUS-B	AWG#14-#18	3.30mm(max)	SUS 304	-----	5,000 PCS

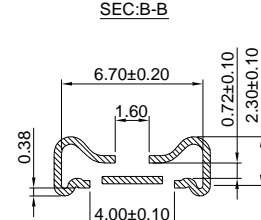
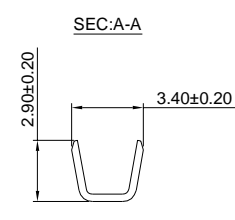
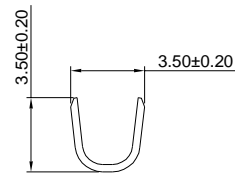
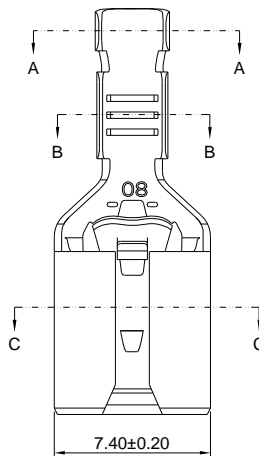
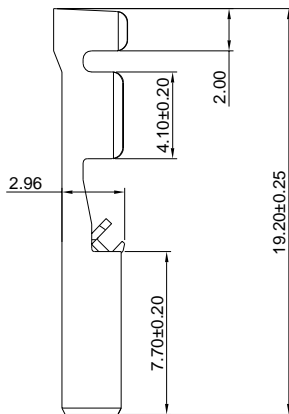
Optional Gold plating available but MOQ requested

A7921-T-B-L

5.00mm pitch Crimp Terminal

Reference Informations:

*Used in A7921HC A7921HD series Housing



Ordering information & Specifications:

Unit:mm

Part NO.	Wire Range	Insulation O.D.	Material	Finish	Qty/reel
A7921-TB-B-L	AWG#20-#22	1.80mm(max)	Brass	Tin over Nickel	5,000 PCS
A7921-TP-B-L	AWG#20-#22	1.80mm(max)	Phosphor Bronze	Tin over Nickel	5,000 PCS
A7921-SUS-B-L	AWG#20-#22	1.80mm(max)	SUS 304	-----	5,000 PCS

Optional Gold plating available but MOQ requested

A7921 SERIES

5.00mm pitch wire to board connector

A7921HC

5.00mm pitch Housing

Reference Informations:

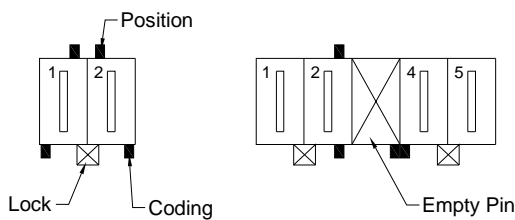
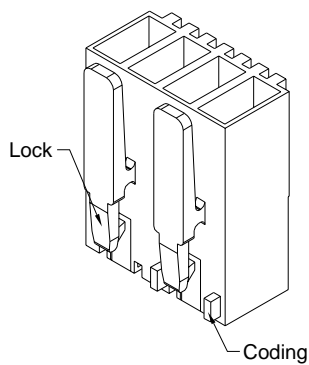
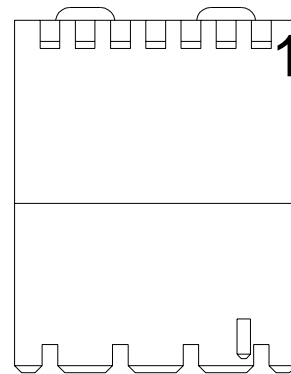
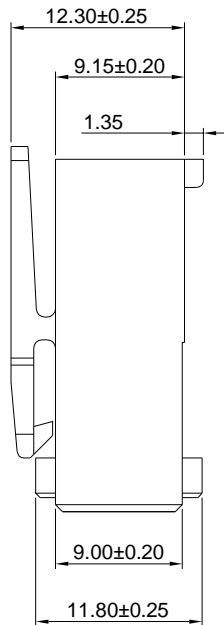
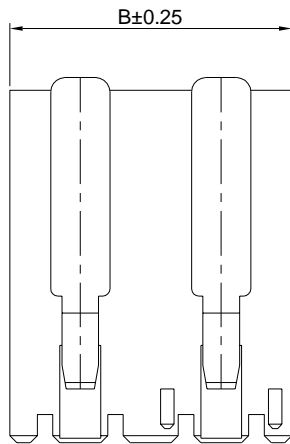
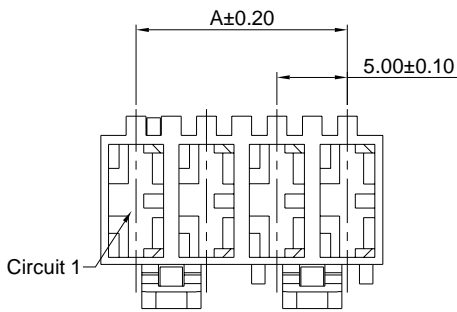
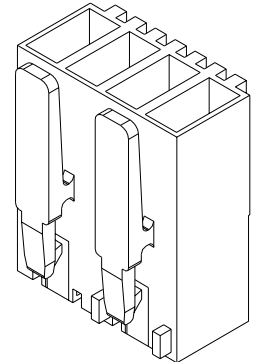
- *Material: Nylon 66, UL94V-0
- *Suitable A7921-T-A/L, A7921-T-B/L series Terminal
- *Mates with A7921WVA, A7921WRA series Wafer
- *Color: Ivory

Ordering Information:

A7921HC-XP - **
1 2

1. Part No.

2. Please find page 413~415 for details.



Ordering Information & Dimensions:

PART NO.	Dimensions	
	A	B
A7921HC-2P	5.00	10.00
A7921HC-3P	10.00	15.00
A7921HC-4P	15.00	20.00
A7921HC-5P	20.00	25.00
A7921HC-6P	25.00	30.00
A7921HC-7P	30.00	35.00
A7921HC-8P	35.00	40.00
A7921HC-9P	40.00	45.00
A7921HC-10P	45.00	50.00
A7921HC-11P	50.00	55.00
A7921HC-12P	55.00	60.00

Unit: mm

A7921 SERIES

5.00mm pitch wire to board connector

A7921HD

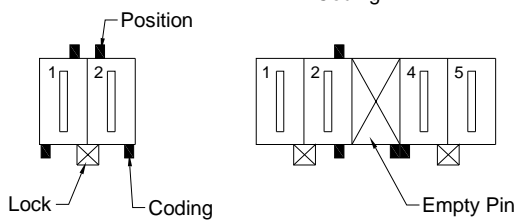
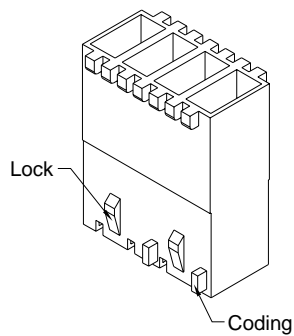
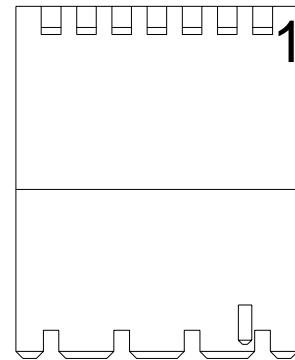
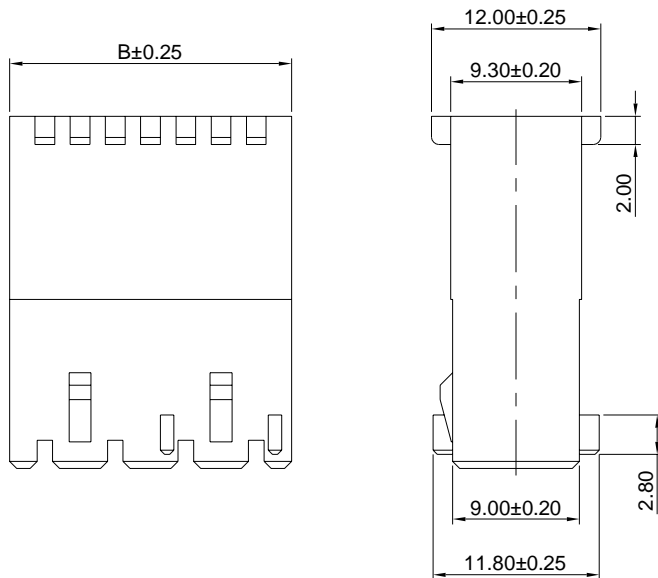
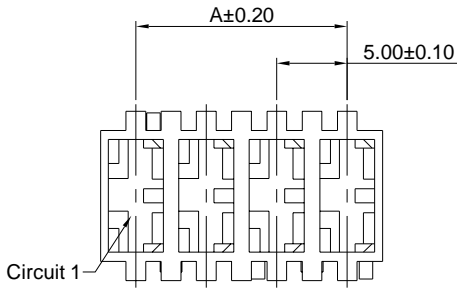
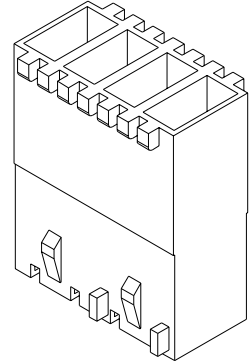
5.00mm pitch Housing

Reference Informations:

- *Material: Nylon 66, UL94V-0
- *Suitable A7921-T-A/-L, A7921-T-B/-L series Terminal
- *Mates with A7921WVA, A7921WRA series Wafer
- *Color: Ivory

Ordering Information:

- A7921HD-XP - **
 $\frac{1}{2}$
1. Part No.
 2. Please find page 413~415 for details.



Ordering Information & Dimensions:

PART NO.	Dimensions	
	A	B
A7921HD-2P	5.00	10.00
A7921HD-3P	10.00	15.00
A7921HD-4P	15.00	20.00
A7921HD-5P	20.00	25.00
A7921HD-6P	25.00	30.00
A7921HD-7P	30.00	35.00
A7921HD-8P	35.00	40.00
A7921HD-9P	40.00	45.00
A7921HD-10P	45.00	50.00
A7921HD-11P	50.00	55.00
A7921HD-12P	55.00	60.00

Unit: mm

A7921 SERIES

5.00mm pitch wire to board connector

A7921WVA

5.00mm pitch 180° Wafer

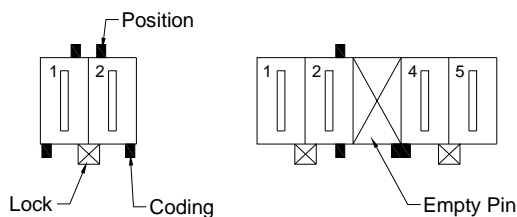
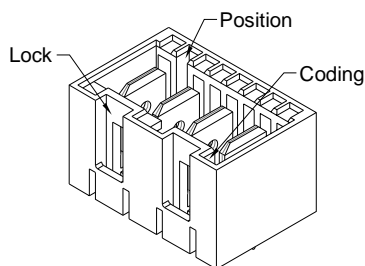
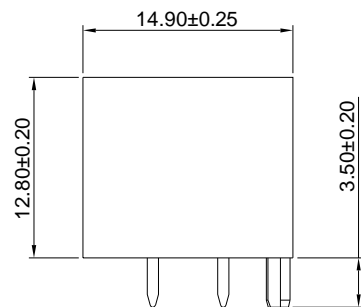
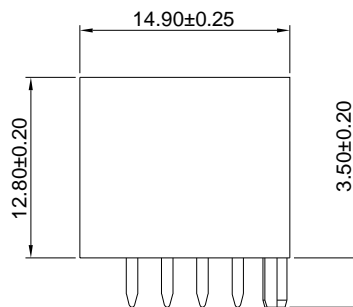
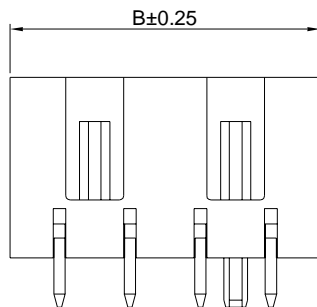
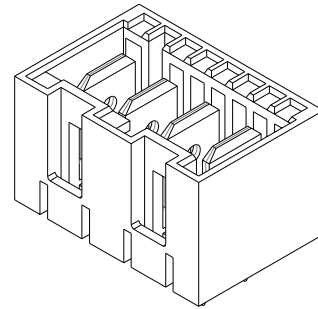
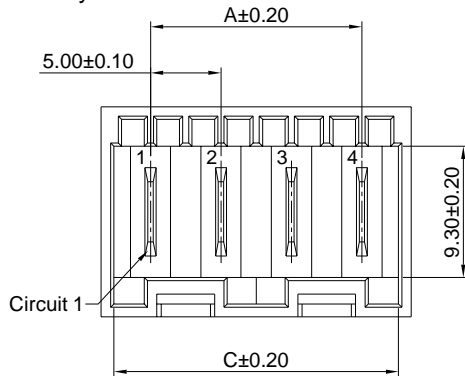
Reference Informations:

- *Material: Insulator: Nylon 66+30%GF, UL94V-0
Terminal: Copper alloy
- *Suitable A7921HC, A7921HD series Housing
- *Contact: Tin Plated 120u" over Ni 30u" min
Silver Plated 80~120u" over Ni 30u" min
- *Compliant IEC 60695-2-11 and IEC 60335-1(750°C, Flamme<2S)
- *Color: Ivory

Ordering Information:

A7921WVA - $\frac{XP}{1}$ - $\frac{*}{2}$ - $\frac{**}{3}$ - $\frac{****}{4}$

1. Part No.
2. Circuit number.
3. Terminal Finish:
(blank): Tin over Nickel
S: Silver over Nickel
4. Please find page 413~415 for details.



Ordering Information & Dimensions:

PART NO.	Dimensions		
	A	B	C
A7921WVA-2P	5.00	10.00	10.20
A7921WVA-3P	10.00	15.00	15.20
A7921WVA-4P	15.00	20.00	20.20
A7921WVA-5P	20.00	25.00	25.20
A7921WVA-6P	25.00	30.00	30.20
A7921WVA-7P	30.00	35.00	35.20
A7921WVA-8P	35.00	40.00	40.20
A7921WVA-9P	40.00	45.00	45.20
A7921WVA-10P	45.00	50.00	50.20
A7921WVA-11P	50.00	55.00	55.20
A7921WVA-12P	55.00	60.00	60.20

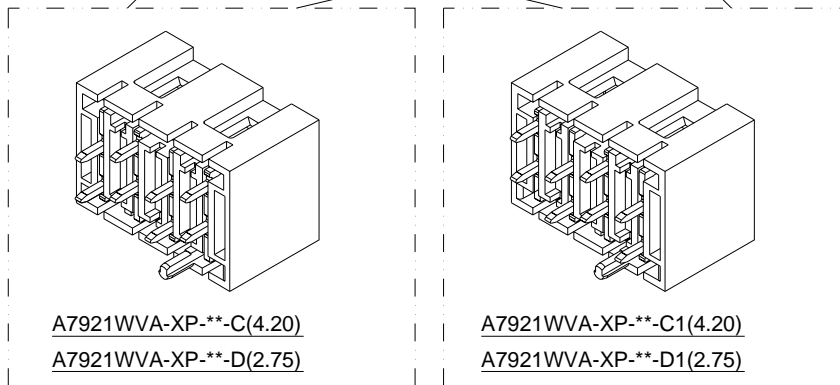
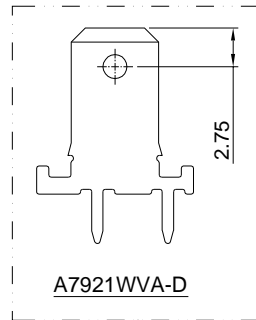
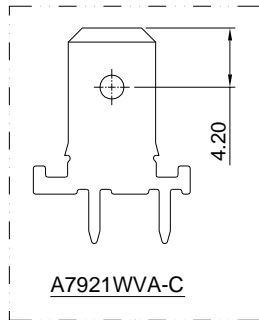
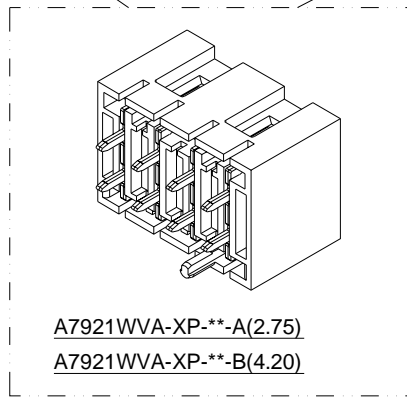
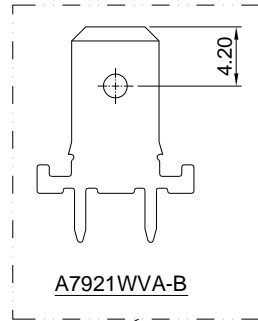
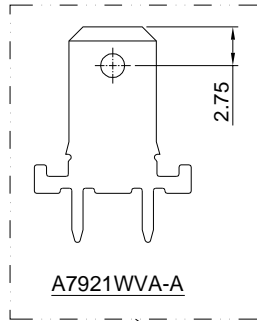
Unit: mm

A7921 SERIES

5.00mm pitch wire to board connector

A7921WVA

5.00mm pitch 180° Wafer

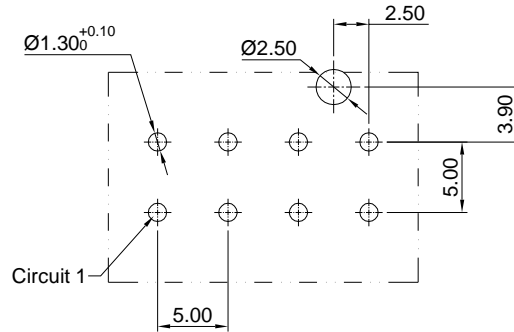


A7921 SERIES

5.00mm pitch wire to board connector

A7921WVA

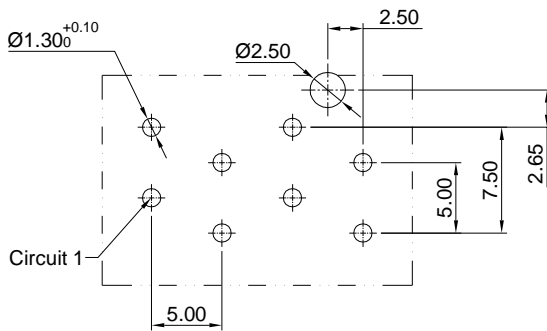
5.00mm pitch 180° Wafer



P.C.B LAYOUT

[A7921WVA-XP-**-A(2.75)]

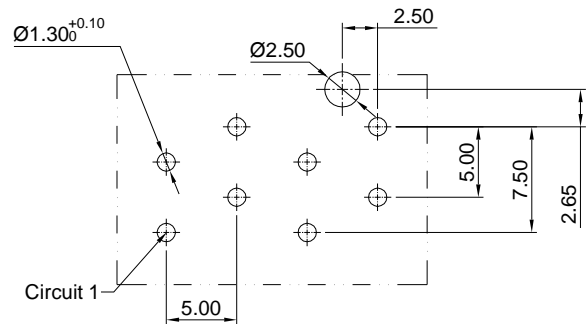
[A7921WVA-XP-**-B(4.20)]



P.C.B LAYOUT

[A7921WVA-XP-**-C(4.20)]

[A7921WVA-XP-**-D(2.75)]



P.C.B LAYOUT

[A7921WVA-XP-**-C1(4.20)]

[A7921WVA-XP-**-D1(2.75)]

A7921 SERIES

5.00mm pitch wire to board connector

A7921WRA

5.00mm pitch 90° Wafer

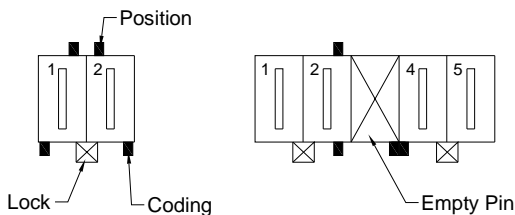
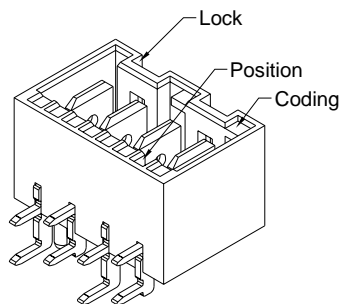
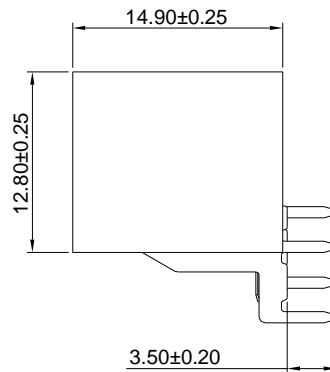
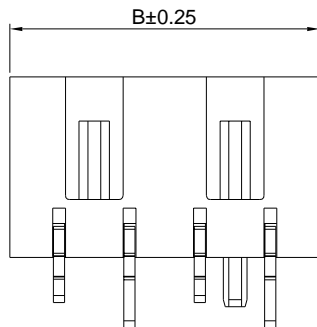
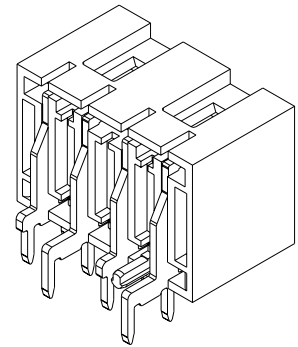
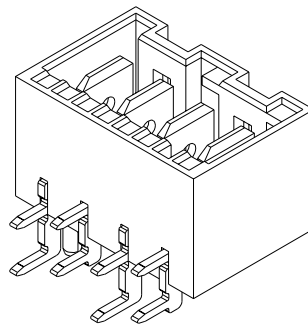
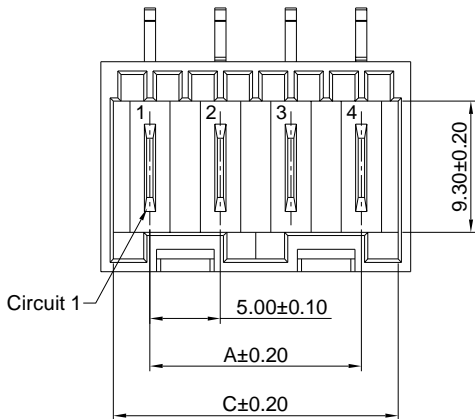
Reference Informations:

- *Material: Insulator: Nylon 66+30%GF, UL94V-0
Terminal: Copper alloy
- *Suitable A7921HC, A7921HD series Housing
- *Contact: Tin Plated 120u" over Ni 30u"min
Silver Plated 80~120u" over Ni 30u" min
- *Compliant IEC 60695-2-11 and IEC 60335-1(750°C, Flamme<2S)
- *Color: Ivory

Ordering Information:

A7921WRA - $\frac{XP}{1}$ - $\frac{*}{2}$ - $\frac{**}{3}$ - $\frac{**}{4}$

1. Part No.
2. Circuit number.
3. Terminal Finish:
(blank): Tin over Nickel
S: Silver over Nickel
4. Please find page 413~415 for details.



Ordering Information & Dimensions:

PART NO.	Dimensions		
	A	B	C
A7921WRA-2P	5.00	10.00	10.20
A7921WRA-3P	10.00	15.00	15.20
A7921WRA-4P	15.00	20.00	20.20
A7921WRA-5P	20.00	25.00	25.20
A7921WRA-6P	25.00	30.00	30.20
A7921WRA-7P	30.00	35.00	35.20
A7921WRA-8P	35.00	40.00	40.20
A7921WRA-9P	40.00	45.00	45.20
A7921WRA-10P	45.00	50.00	50.20
A7921WRA-11P	50.00	55.00	55.20
A7921WRA-12P	55.00	60.00	60.20

Unit: mm

A7921 SERIES

5.00mm pitch wire to board connector

A7921WRA-R

5.00mm pitch 90° Wafer

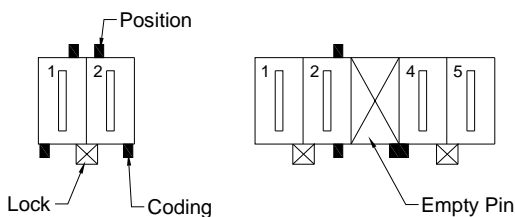
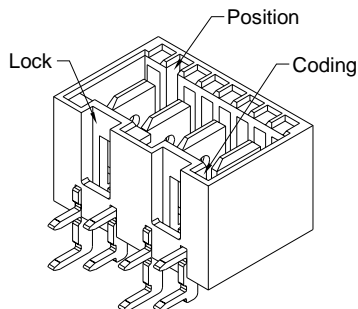
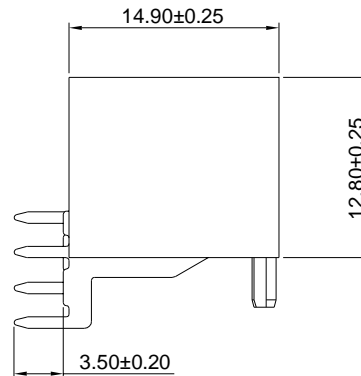
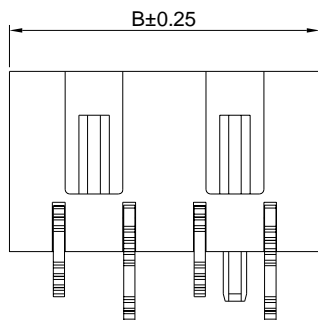
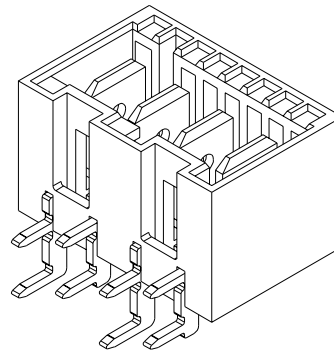
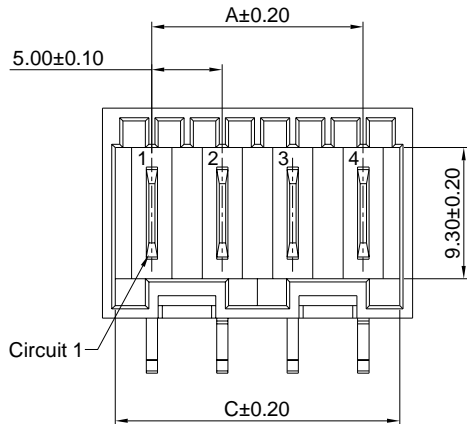
Reference Informations:

- *Material: Insulator: Nylon 66+30%GF, UL94V-0
Terminal: Copper alloy
- *Suitable A7921HC, A7921HD series Housing
- *Contact: Tin Plated 120u" over Ni 30u"min
Silver Plated 80~120u" over Ni 30u" min
- *Compliant IEC 60695-2-11 and IEC 60335-1(750°C, Flamme<2S)
- *Color: Ivory

Ordering Information:

A7921WRA - R - XP - * - **
1 2 3 4 5

1. Part No.
2. Reverse Type
3. Circuit number.
4. Terminal Finish:
(blank): Tin over Nickel
S: Silver over Nickel
5. Please find page 413~415 for details.



Ordering Information & Dimensions:

PART NO.	Dimensions		
	A	B	C
A7921WRA-R-2P	5.00	10.00	10.20
A7921WRA-R-3P	10.00	15.00	15.20
A7921WRA-R-4P	15.00	20.00	20.20
A7921WRA-R-5P	20.00	25.00	25.20
A7921WRA-R-6P	25.00	30.00	30.20
A7921WRA-R-7P	30.00	35.00	35.20
A7921WRA-R-8P	35.00	40.00	40.20
A7921WRA-R-9P	40.00	45.00	45.20
A7921WRA-R-10P	45.00	50.00	50.20
A7921WRA-R-11P	50.00	55.00	55.20
A7921WRA-R-12P	55.00	60.00	60.20

Unit: mm

A7921 SERIES

5.00mm pitch wire to board connector

A7921WRA-RH

5.00mm pitch 90° Wafer

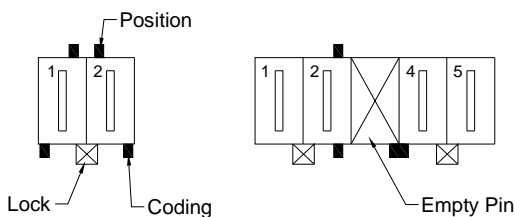
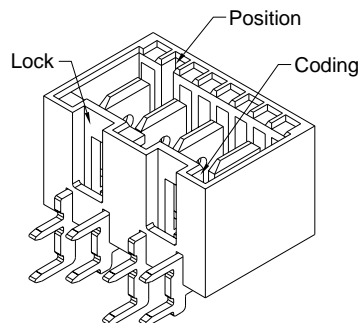
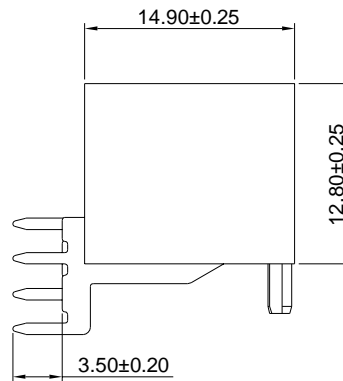
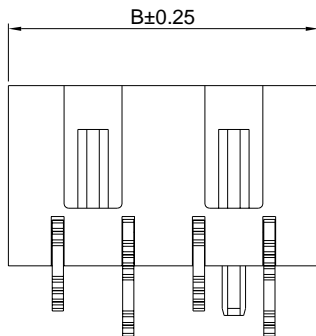
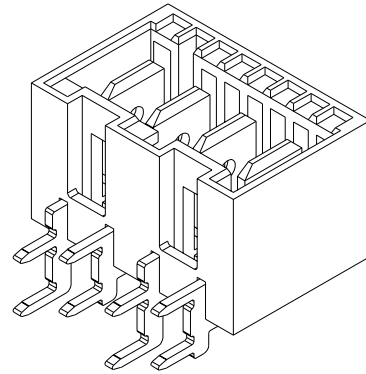
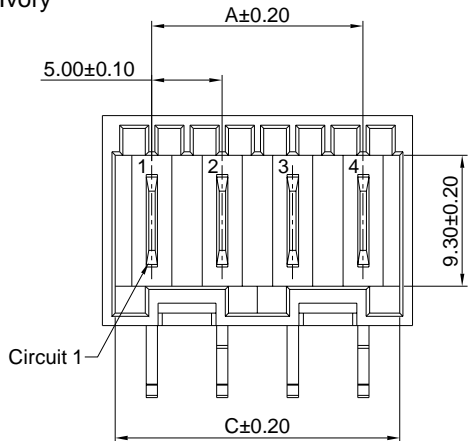
Reference Informations:

- *Material: Insulator: Nylon 66+30%GF, UL94V-0
Terminal: Copper alloy
- *Suitable A7921HC, A7921HD series Housing
- *Contact: Tin Plated 120u" over Ni 30u" min
Silver Plated 80~120u" over Ni 30u" min
- *Compliant IEC 60695-2-11 and IEC 60335-1(750°C, Flamme<2S)
- *Color: Ivory

Ordering Information:

A7921WRA - RH - XP - * - **
1 2 3 4 5

1. Part No.
2. Reverse Type
3. Circuit number.
4. Terminal Finish:
(blank): Tin over Nickel
S: Silver over Nickel
5. Please find page 413~415 for details.



Ordering Information & Dimensions:

PART NO.	Dimensions		
	A	B	C
A7921WRA-RH-2P	5.00	10.00	10.20
A7921WRA-RH-3P	10.00	15.00	15.20
A7921WRA-RH-4P	15.00	20.00	20.20
A7921WRA-RH-5P	20.00	25.00	25.20
A7921WRA-RH-6P	25.00	30.00	30.20
A7921WRA-RH-7P	30.00	35.00	35.20
A7921WRA-RH-8P	35.00	40.00	40.20
A7921WRA-RH-9P	40.00	45.00	45.20
A7921WRA-RH-10P	45.00	50.00	50.20
A7921WRA-RH-11P	50.00	55.00	55.20
A7921WRA-RH-12P	55.00	60.00	60.20

Unit: mm

A7921 SERIES

5.00mm pitch wire to board connector

A7921WRA-RH-F

5.00mm pitch 90° Wafer

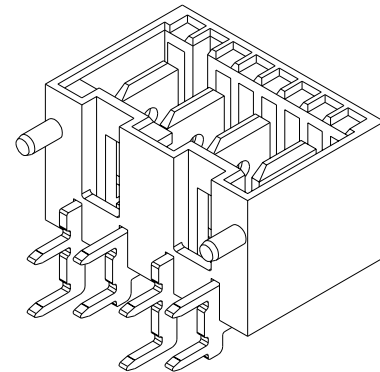
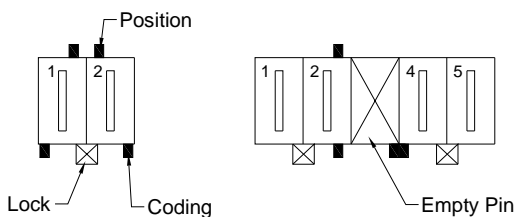
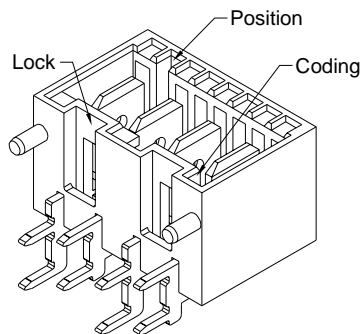
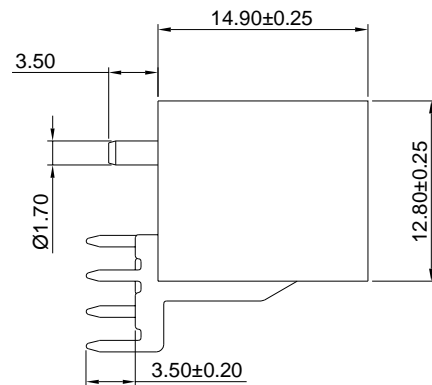
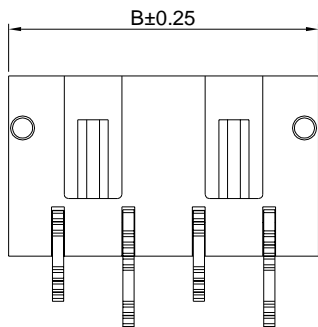
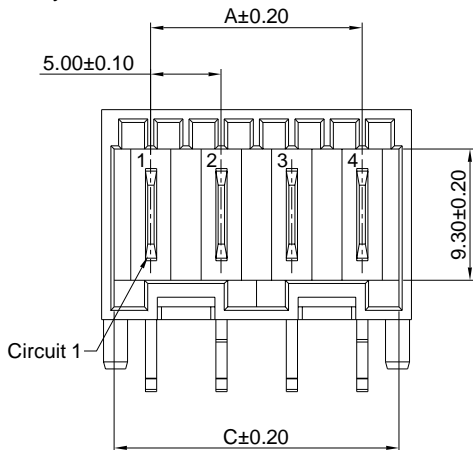
Reference Informations:

- *Material: Insulator: Nylon 66+30%GF, UL94V-0
Terminal: Copper alloy
- *Suitable A7921HC, A7921HD series Housing
- *Contact: Tin Plated 120u" over Ni 30u"min
Silver Plated 80~120u" over Ni 30u" min
- *Compliant IEC 60695-2-11 and IEC 60335-1(750°C, Flamme<2S)
- *Color: Ivory

Ordering Information:

A7921WRA - RH - F - XP - * - **
1 2 3 4 5 6

1. Part No.
2. Reverse Type
3. Foot
4. Circuit number.
5. Terminal Finish:
(blank): Tin over Nickel
S: Silver over Nickel
6. Please find page 413~415 for details.



Ordering Information & Dimensions:

PART NO.	Dimensions		
	A	B	C
A7921WRA-RH-F-2P	5.00	10.00	10.20
A7921WRA-RH-F-3P	10.00	15.00	15.20
A7921WRA-RH-F-4P	15.00	20.00	20.20
A7921WRA-RH-F-5P	20.00	25.00	25.20
A7921WRA-RH-F-6P	25.00	30.00	30.20
A7921WRA-RH-F-7P	30.00	35.00	35.20
A7921WRA-RH-F-8P	35.00	40.00	40.20
A7921WRA-RH-F-9P	40.00	45.00	45.20
A7921WRA-RH-F-10P	45.00	50.00	50.20
A7921WRA-RH-F-11P	50.00	55.00	55.20
A7921WRA-RH-F-12P	55.00	60.00	60.20

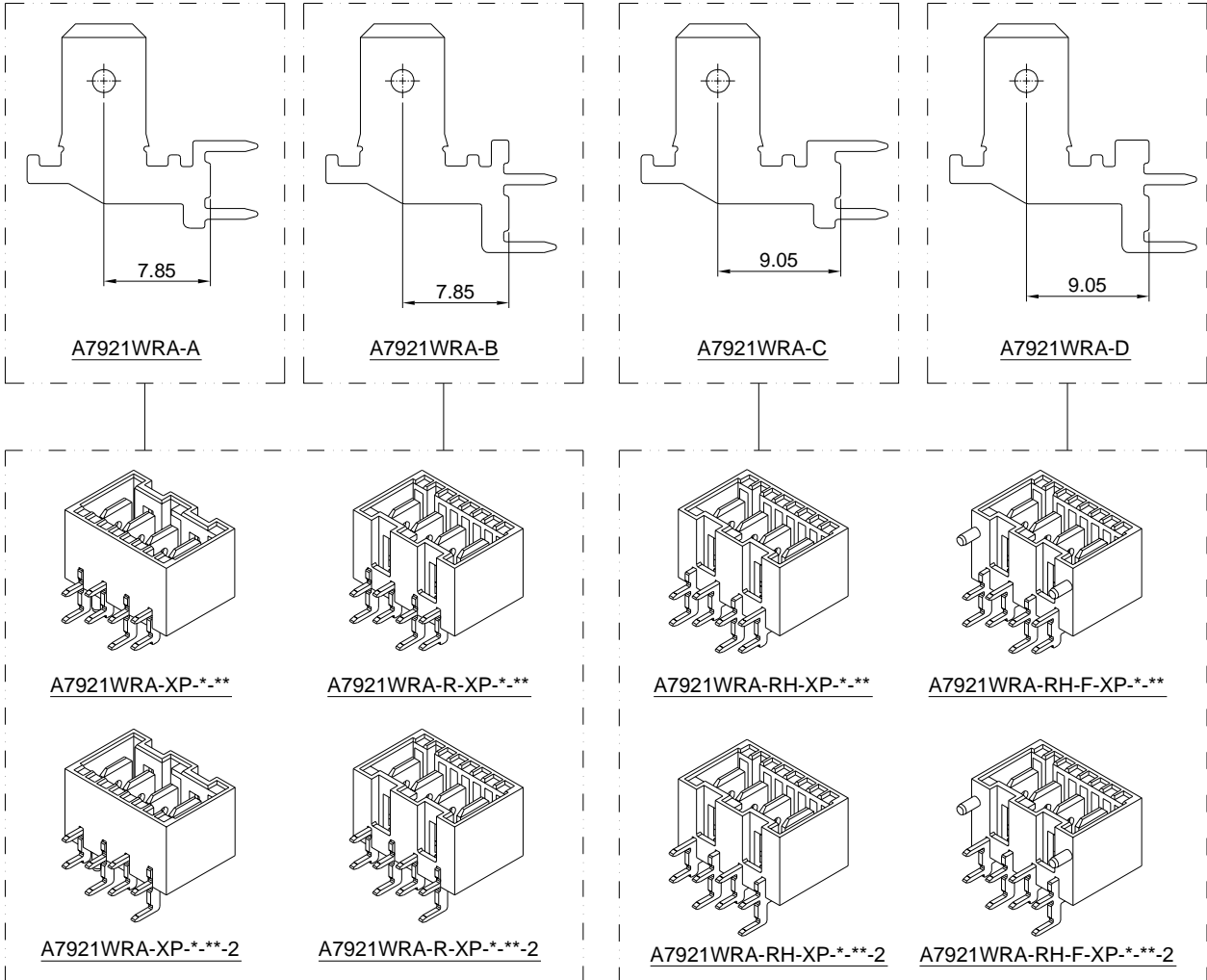
Unit: mm

A7921 SERIES

5.00mm pitch wire to board connector

A7921WVA

5.00mm pitch 180° Wafer

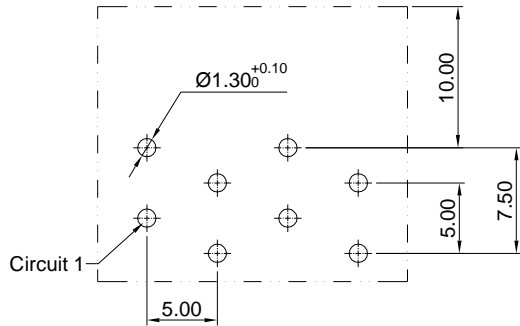


A7921 SERIES

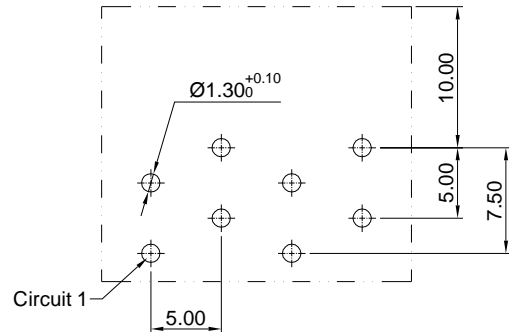
5.00mm pitch wire to board connector

A7921WVA

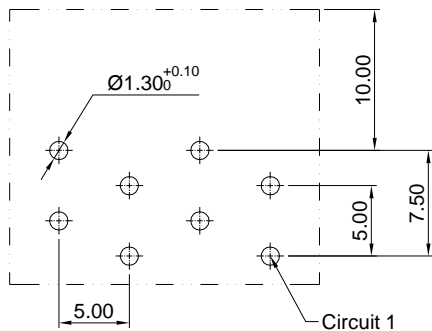
5.00mm pitch 180° Wafer



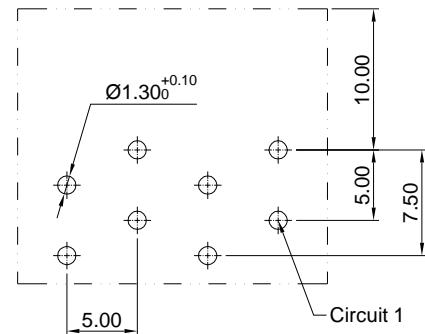
P.C.B LAYOUT
[A7921WRA-XP-*]**



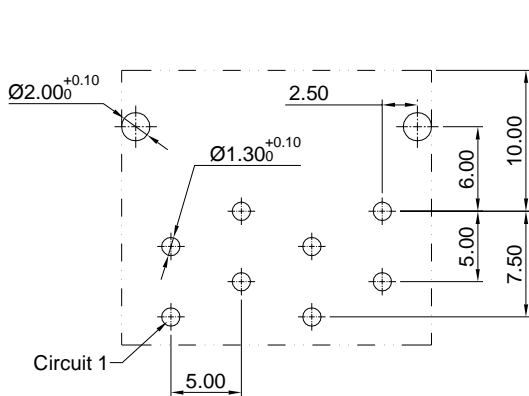
P.C.B LAYOUT
[A7921WRA-XP-*]**-2



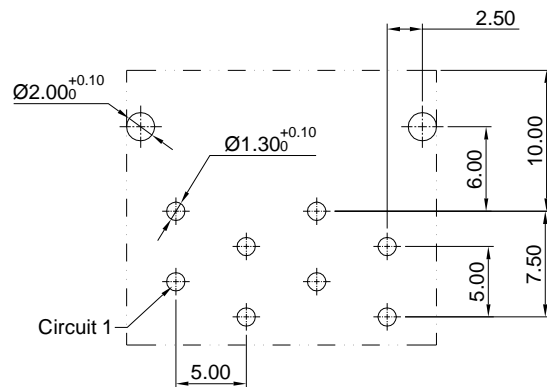
P.C.B LAYOUT
[A7921WRA-R-XP-*]**
[A7921WRA-RH-XP-*]**



P.C.B LAYOUT
[A7921WRA-R-XP-*]**-2
[A7921WRA-RH-XP-*]**-2



P.C.B LAYOUT
[A7921WRA-RH-F-XP-*]**



P.C.B LAYOUT
[A7921WRA-RH-F-XP-*]**-2

A7921 SERIES

5.00mm pitch wire to board connector

Type	0A	0B	0C	0D	0E	0F	0G	0H	0I	0J	0K	0L	0M	0N	0P
2 PIN															

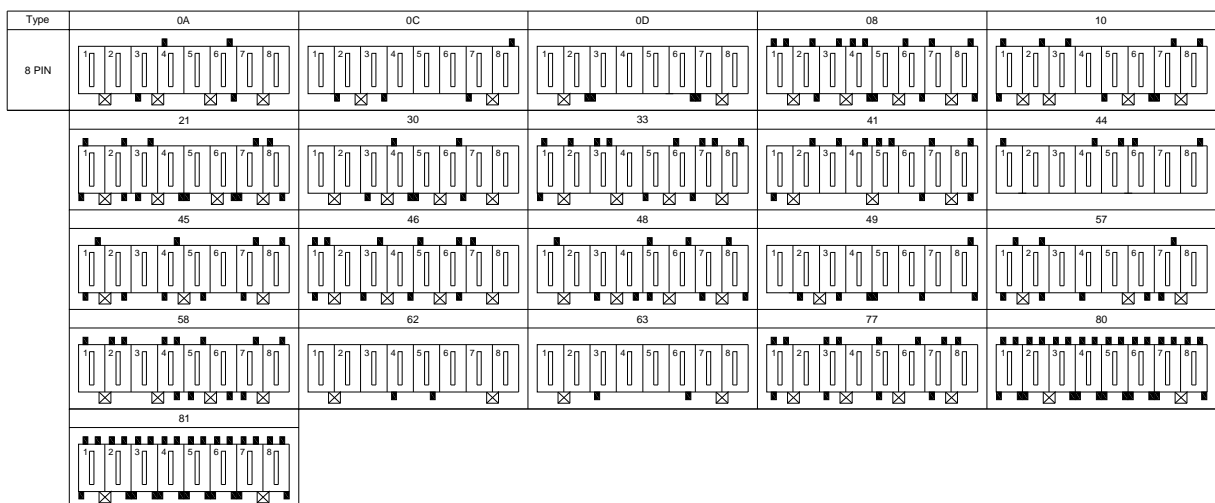
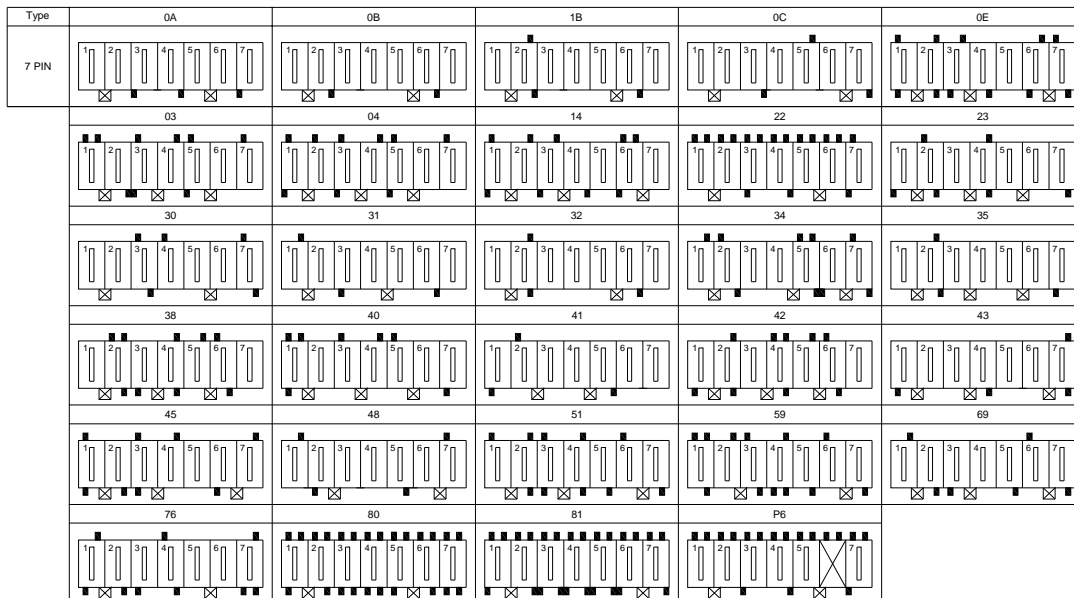
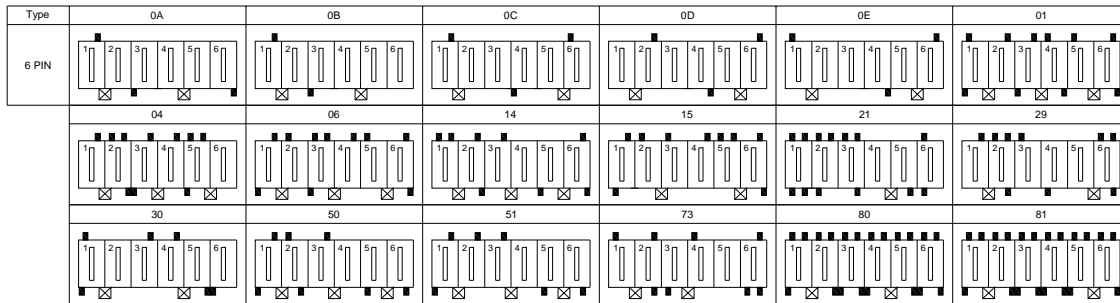
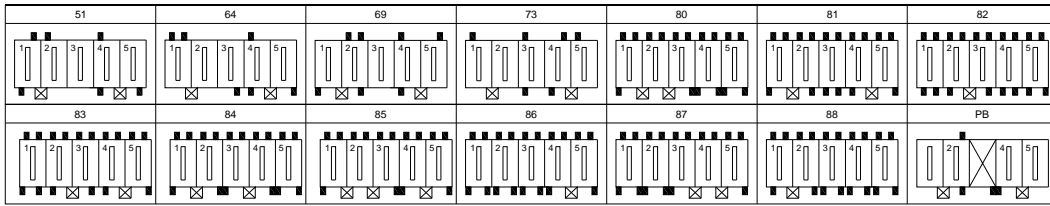
Type	0A	0B	0C	0D	0E	0F	0G	0H	0I	0K	0L
3 PIN											

Type	0A	0B	0C	0D	0E	0F	0G	0H	0I
4 PIN									

Type	0A	0B	0C	0D	0E	0F	0G
5 PIN							

A7921 SERIES

5.00mm pitch wire to board connector



A7921 SERIES

5.00mm pitch wire to board connector

Type	0A	0B	0C	0D
9 PIN				
	08	31	42	43
	48	49	52	53
57	58	80	81	

Type	0A	01	02	30
10 PIN				
	36	46	50	51
	52	64	70	72
74	75	76	80	

Type	0A	0B	0C
11 PIN			
	01	13	33
	55	60	64
80			

Type	27	30	59
12 PIN			
	65	80	